



AUTOLYCUS

128 beams projecting to the beat of music, color change and strobe, multi-colored, bright five color beams shooting from 8 lens covering a large area

Electronic power supply AC 90-240V 50/60HZ

full Master/Slave operation in any operational mode,
color strobe effect and long life operation

black housing with 4*high MCD RGBW four in one 8W LEDs

low heat, Long Life LEDs (100,000 hrs.)

operational Modes: DMX 512 protocol, Sound Active, Auto, master/slave

Color strobe effect slow to fast, electronic dimming from 0-100%

Uses 9 DMX Channels

Stand Alone, Master/Slave

Linkable via 3-pin XLR cable, hanging brackets included

4-digital LED display

Dual brackets allowing fixture to be hung or set on the ground

ITEM DIMENSION: 32*32*7CM

ITEM WEIGHT: 4KGS



TRLD-719

FLAT PAR WHITE 18

Electronic power supply AC 90-240V 50/60HZ

full Master/Slave operation in any operational mode,
color strobe effect and long life operation

black housing with 9*high MCD cool white 3W+9*high MCD warm white 3W

low heat, Long Life LEDs (100,000 hrs.)

operational Modes: DMX 512 protocol, Sound Active, Auto, master/slave

Color strobe effect slow to fast, electronic dimming from 0-100%

Uses 7 DMX Channels

Stand Alone, Master/Slave

Linkable via 3-pin XLR cable, hanging brackets included

4-digital LED display

Dual brackets allowing fixture to be hung or set on the ground

ITEM DIMENSION: 270*230*100MM

ITEM WEIGHT: 4KGS



TRLD-719

FLAT PAR RGBW 9

Electronic power supply AC 90-240V 50/60HZ

full Master/Slave operation in any operational mode,

color strobe effect and long life operation

producing various colors, red, green, blue, yellow, white, pink, purple, cyan

low heat, Long Life LEDs (100,000 hrs.)

black housing with 9*high MCD RGBW 8W four in one

low heat, Long Life LEDs (100,000 hrs.)

operational Modes: DMX 512 protocol, Sound Active, Auto, master/slave

Color strobe effect slow to fast, electronic dimming from 0-100%

Uses 9 DMX Channels

Stand Alone, Master/Slave

Linkable via 3-pin XLR cable, brackets included

4-digital LED display

Dual brackets allowing fixture to be hung or set on the ground

ITEM DIMENSION: 270*230*100MM

ITEM WEIGHT: 4KGS



TRLD-719

FLAT PAR TRI 18

Electronic power supply AC 90-240V 50/60HZ

full Master/Slave operation in any operational mode,

color strobe effect and long life operation

producing various colors, red, green, blue, yellow, white, pink, purple, cyan

low heat,Long Life LEDs (100,000 hrs.)

black housing with 18*high MCD RGB 3W three in one

low heat,Long Life LEDs (100,000 hrs.)

operational Modes: DMX 512 protocol, Sound Active, Auto, master/slave

Color strobe effect slow to fast, electronic dimming from 0-100%

Uses 8 DMX Channels

Stand Alone,Master/Slave

Linkable via 3-pin XLR cable,hanging brackets included

4-digital LED display

Dual brackets allowing fixture to be hung or set on the ground

ITEM DIMENSION: 33*28*11MM

ITEM WEIGHT:4KGS



MEGA PAR RGB

Electronic power supply AC 90-240V 50/60HZ

full Master/Slave operation in any operational mode,

color strobe effect and long life operation

**black housing with 10mm high MCD LEDs,
red/green/blue each 56/56/56pcs**

producing various colors,red,green,blue, yellow,white,pink,purple,cyan

low heat,Long Life LEDs (100,000 hrs.)

operational Modes: DMX 512 protocol, Sound Active, Auto, master/slave

Color strobe effect slow to fast, electronic dimming from 0-100%

Uses 8 DMX Channels

Stand Alone,Master/Slave

Linkable via 3-pin XLR cable,hanging brackets included

Dual brackets allowing fixture to be hung or set on the ground

4-digital LED display

ITEM DIMENSION: 270*230*100MM

ITEM WEIGHT:2.5KGS

MEGA PAR RGBW

Electronic power supply AC 90-240V 50/60HZ

full Master/Slave operation in any operational mode,

color strobe effect and long life operation

**black housing with 10mm high MCD LEDs, red/green/blue/white each
51/51/51/51pcs**

producing various colors,red,green,blue, yellow,white,pink,purple,cyan

low heat,Long Life LEDs (100,000 hrs.)

operational Modes: DMX 512 protocol, Sound Active, Auto, master/slave

Color strobe effect slow to fast, electronic dimming from 0-100%
Uses 9 DMX Channels
Stand Alone, Master/Slave
Linkable via 3-pin XLR cable, hanging brackets included
Dual brackets allowing fixture to be hung or set on the ground
4-digital LED display
ITEM DIMENSION: 270*230*100MM
ITEM WEIGHT: 2.5KGS

MEGA TRI PAR

Electronic power supply AC 90-240V 50/60HZ
full Master/Slave operation in any operational mode,
color strobe effect and long life operation

black housing with 5*high MCD LEDs three in one RGB 3W

producing various colors, red, green, blue, yellow, white, pink, purple, cyan
low heat, Long Life LEDs (100,000 hrs.)
operational Modes: DMX 512 protocol, Sound Active, Auto, master/slave
Color strobe effect slow to fast, electronic dimming from 0-100%
Uses 8 DMX Channels
Stand Alone, Master/Slave
Linkable via 3-pin XLR cable, hanging brackets included
Dual brackets allowing fixture to be hung or set on the ground
4-digital LED display
ITEM DIMENSION: 270*230*100MM
ITEM WEIGHT: 2.5KGS



TALUS BALL RGB

sharp beams from 116 lenses rotating
360 degrees from a high output TRI Color LED source that fill a dance floor, ceiling or wall
3 DMX Channels (Rotation Speed/Direction; Dimmer/Strobe; Color)
Electronic power supply AC 90-240V 50/60HZ
full Master/Slave operation in any operational mode,
color strobe effect and long life operation
black housing with 5*three in one RGB 3W high MCD LEDs
producing various colors, red, green, blue, yellow, white, pink, purple, cyan
high quality step motors for smooth scanning
low heat, Long Life LEDs (100,000 hrs.)

operational Modes: DMX 512 protocol, Sound Active, Auto, master/slave
Color strobe effect slow to fast, electronic dimming from 0-100%
Uses 8 DMX Channels
Stand Alone, Master/Slave
Linkable via 3-pin XLR cable, hanging brackets included
4-digital LED display
ITEM DIMENSION: 320*190*420MM
ITEM WEIGHT: 5KGS

TALUS BALL WHITE

sharp beams from 116 lenses rotating from a high output white LED source that fill a dance floor, ceiling or wall, beams of light slowly rotating 360 degrees

Electronic power supply AC 90-240V 50/60HZ

black housing with 5*3W white high MCD LEDs

high quality step motors for smooth scanning

low heat, Long Life LEDs (100,000 hrs.)

operational Modes: Auto

ITEM DIMENSION: 320*190*420MM

ITEM WEIGHT: 5KGS



SEMELE FLOWER

LED Moonflower effect with 15 gobo/color combinations rotating back and forth and changing to the beat of music

Manual focusing lens

Electronic power supply AC 90-240V 50/60HZ

full Master/Slave operation in any operational mode,
color strobe effect and long life operation

black housing with high MCD white LED 30W

low heat, Long Life LEDs (100,000 hrs.)

operational Modes: DMX 512 protocol, Sound Active, Auto, master/slave

Color strobe effect slow to fast, electronic dimming from 0-100%

Uses 3 DMX Channels

Stand Alone, Master/Slave

Linkable via 3-pin XLR cable, hanging brackets included

4-digital LED display

ITEM DIMENSION: 230*200*190MM

ITEM WEIGHT: 3KGS



FIVE STAR

LED Moonflower effect with with 5 lenses and 4 strobe strips

Electronic power supply AC 90-240V 50/60HZ

full Master/Slave operation in any operational mode,
color strobe effect and long life operation

**black housing with 5 mm high MCD LEDs,
red/green/blue/white each 60/75/45/30pcs, plus 72pcs of white strobe LEDs**

low heat,Long Life LEDs (100,000 hrs.)

operational Modes: DMX 512 protocol, Sound Active, Auto, master/slave

Color strobe effect slow to fast, electronic dimming from 0-100%

Uses 8 DMX Channels

Stand Alone,Master/Slave

Linkable via 3-pin XLR cable,hanging brackets included

4-digital LED display

ITEM DIMENSION: 31*31*23CM

ITEM WEIGHT:4KGS



LED BAR PRO RGB

Electronic power supply AC 90-240V 50/60HZ

full Master/Slave operation in any operational mode,
color strobe effect and long life operation

black housing with 24*high MCD 3W LEDs, RED/GREEN/BLUE each 8pcs

producing various colors,red,green,blue, yellow,white,pink,purple,cyan

low heat,Long Life LEDs (100,000 hrs.)

operational Modes: DMX 512 protocol, Sound Active, Auto, master/slave

Color strobe effect slow to fast, electronic dimming from 0-100%

Uses 16 DMX Channels

Stand Alone, Master/Slave
Linkable via 3-pin XLR cable, hanging brackets included
Dual brackets allowing fixture to be hung or set on the ground
4-digital LED display
ITEM DIMENSION: 41*19*7CM
ITEM WEIGHT: 3KGS

LED BAR PRO RGBW

Electronic power supply AC 90-240V 50/60HZ

full Master/Slave operation in any operational mode,
color strobe effect and long life operation

black housing with 24*high MCD 8W LEDs RGBW four in one

producing various colors, red, green, blue, yellow, white, pink, purple, cyan

low heat, Long Life LEDs (100,000 hrs.)

operational Modes: DMX 512 protocol, Sound Active, Auto, master/slave

Color strobe effect slow to fast, electronic dimming from 0-100%

Uses 16 DMX Channels

Stand Alone, Master/Slave

Linkable via 3-pin XLR cable, hanging brackets included

Dual brackets allowing fixture to be hung or set on the ground

4-digital LED display

ITEM DIMENSION: 41*19*7CM

ITEM WEIGHT: 3KGS



MINI COLOR PAR

Electronic power supply AC 90-240V 50/60HZ

full Master/Slave operation in any operational mode,
color strobe effect and long life operation

black dia cast alu. housing with 7*high MCD 1W LEDs, red/green/blue/white, 2/2/2/1 pcs

producing various colors, red, green, blue, yellow, white, pink, purple, cyan

low heat, Long Life LEDs (100,000 hrs.)

operational Modes: DMX 512 protocol, Auto, master/slave

Color strobe effect slow to fast, electronic dimming from 0-100%

Uses 8 DMX Channels

Stand Alone, Master/Slave

Linkable via 3-pin XLR cable, hanging brackets included

Dual brackets allowing fixture to be hung or set on the ground

4-digital LED display

ITEM DIMENSION: 18*10*7CM

ITEM WEIGHT: 1KGS

MINI COLOR PAR



OTTO MOON FLOWER

160 razor sharp beams of light filling a dance floor, ceiling or wall

Offering rich majestic colors

Electronic power supply AC 90-240V 50/60HZ

full Master/Slave operation in any operational mode,
color strobe effect and long life operation

black housing with high MCD LEDs four in one RGBW 8W

low heat, Long Life LEDs (100,000 hrs.)

operational Modes: DMX 512 protocol, Sound Active, Auto, master/slave

Color strobe effect slow to fast, electronic dimming from 0-100%

Uses 9 DMX Channels

Stand Alone, Master/Slave

Linkable via 3-pin XLR cable, hanging brackets included

4-digital LED display

ITEM DIMENSION: 19*31*34CM

ITEM WEIGHT: 4KGS



THEATRIX BAR

Electronic power supply AC 90-240V 50/60HZ

full Master/Slave operation in any operational mode,
color strobe effect and long life operation

black housing with 48*high MCD 3W LEDs, RED/GREEN/BLUE/WHITE each 12pcs

producing various colors, red, green, blue, yellow, white, pink, purple, cyan

low heat, Long Life LEDs (100,000 hrs.)

operational Modes: DMX 512 protocol, Sound Active, Auto, master/slave

Color strobe effect slow to fast, electronic dimming from 0-100%

Uses 20 DMX Channels

Stand Alone, Master/Slave

Linkable via 3-pin XLR cable, hanging brackets included

Dual brackets allowing fixture to be hung or set on the ground
4-digital LED display
ITEM DIMENSION: 42*17*18CM
ITEM WEIGHT:5KGS



LED BAR UV 16

Great for performance stages, theatrical productions and special effects installations

Electronic power supply AC 90-240V 50/60HZ

full Master/Slave operation in any operational mode,
color strobe effect and long life operation

black housing with 16*high MCD 3W UV LEDs, ultraviolet

producing various colors,red,green,blue, yellow,white,pink,purple,cyan

low heat,Long Life LEDs (100,000 hrs.)

operational Modes: DMX 512 protocol, Sound Active, Auto, master/slave

Color strobe effect slow to fast, electronic dimming from 0-100%

Uses 4 DMX Channels

Stand Alone,Master/Slave

Linkable via 3-pin XLR cable,hanging brackets included

Dual brackets allowing fixture to be hung or set on the ground

4-digital LED display

ITEM DIMENSION: 32*6*18CM

ITEM WEIGHT:3KGS



LED BEAM 100

powered by a high output 100W long life LED source (6500°K, 50,000 hr.) with a low power draw of 200W.

100W High Output LED Moving Head that produces a beam effect

4 operational modes: DMX, Master/Slave, Stand Alone & Sound Active

8 Colors + White,Independent gobo and color wheels,12 Ch. DMX Modes

7 Rotating, Interchangeable Gobos + Spot (5 metal + 2 glass gobos)

Tilt: 270-degree,LCD DMX menu system

Prism Wheel: 3-Facet,auto Pan/Tilt repositioning

Dimming: 0% - 100%

16-degree beam angle,Remote Focus

Hanging bracket included, 3-pin XLR In/Out
 Fan cooled, Shutter: Pulse effect; random strobe slow to fast
 Flicker-free operation, Multi-voltage Operation: 90-260V, 50Hz/60Hz
 Strobe effect, Pan: 540-degree standard/tilt: 280-degree
 Stepper motors with micro stepping
 Power Consumption: 200W max
 Lamp: 100W white LED source, 6500°K (50,000 hours rated)
 Dimensions (LxWxH): 35*32*55cm
 Weight: 13kgs



MINOS BAR

Electronic power supply AC 90-240V 50/60HZ
 full Master/Slave operation in any operational mode,
 led moon flower effect and long life operation including **5mm high MCD LEDs 90 white**
 led pinspot including **1* three in one RGB 3W high MCD LEDs**
 30mw green laser+100mw red laser
 4-digit led display
 low heat, Long Life LEDs (100,000 hrs.)
 operational Modes: DMX 512 protocol, Sound Active, Auto, master/slave
 Color strobe effect from slow to fast
 Uses 7 DMX Channels
 Stand Alone, Master/Slave
 Linkable via 3-pin XLR cable, IEC out/in on rear to daisy chain power
 Dimensions: 540*145*265mm
 Weight: 4 kgs



BAND RGB 72

Electronic power supply AC 90-240V 50/60HZ

full Master/Slave operation in any operational mode,
color strobe effect and long life operation

DIE-CAST aluminium housing

with 72*3W high MCD LEDs, R/G/B EACH 24PCS

IP 65 waterproof level

producing various colors, red, green, blue, yellow, white, pink, purple, cyan

low heat, Long Life LEDs (100,000 hrs.)

operational Modes: DMX 512 protocol, Auto, master/slave

Color strobe effect slow to fast, electronic dimming from 0-100%

Uses 8 DMX Channels

Stand Alone, Master/Slave

Linkable via 3-pin XLR cable, hanging brackets included

4-digital LED display

ITEM DIMENSION: 68*18*25CM

ITEM WEIGHT: 10KGS



DU BAND

Electronic power supply AC 90-240V 50/60HZ

full Master/Slave operation in any operational mode,
color strobe effect and long life operation

DIE-CAST aluminium housing

with 104*3W high MCD LEDs, R/G/B EACH 36/36/32PCS

OR with 104*3W high MCD LEDs, R/G/B/W EACH 28/28/24/24PCS

OR with 104*3W high MCD LEDs, R/G/B/AMBER EACH 28/28/24/24PCS

IP 65 waterproof level

producing various colors, red, green, blue, yellow, white, pink, purple, cyan

low heat, Long Life LEDs (100,000 hrs.)

operational Modes: DMX 512 protocol, Auto, master/slave

Color strobe effect slow to fast, electronic dimming from 0-100%

Uses 8/9 DMX Channels

Stand Alone,Master/Slave
Linkable via 3-pin XLR cable,hanging brackets included
4-digital LED display
ITEM DIMENSION: 68*18*55CM
ITEM WEIGHT:20KGS



SCAN 8 9W RGB

Electronic power supply AC 90-240V 50/60HZ
full Master/Slave operation in any operational mode,
color strobe effect and long life operation
with 8 pcs of three in one full color 9W high MCD LEDs, 8 separate led modules
producing various colors,red,green,blue, yellow,white,pink,purple,cyan
high quality step motors for smooth scanning
low heat,Long Life LEDs (100,000 hrs.)
operational Modes: DMX 512 protocol, Sound Active, Auto, master/slave
Color strobe effect slow to fast, electronic dimming from 0-100%
Uses 20 DMX Channels
Stand Alone,Master/Slave
Linkable via 3-pin XLR cable,hanging brackets included
IEC out/in on rear to daisy chain power optional
4-digital LED display
ITEM DIMENSION: 1100*300*270MM
ITEM WEIGHT:14KGS

SCAN 8

Electronic power supply AC 90-240V 50/60HZ
full Master/Slave operation in any operational mode,
color strobe effect and long life operation
black housing with 120 pcs of 5mm high MCD LEDs, red/green/blue each 40pcs, 8 separate led modules
producing various colors,red,green,blue, yellow,white,pink,purple,cyan
high quality step motors for smooth scanning
low heat,Long Life LEDs (100,000 hrs.)
operational Modes: DMX 512 protocol, Sound Active, Auto, master/slave
Color strobe effect slow to fast, electronic dimming from 0-100%
Uses 20 DMX Channels
Stand Alone,Master/Slave
Linkable via 3-pin XLR cable,hanging brackets included
IEC out/in on rear to daisy chain power optional
4-digital LED display
ITEM DIMENSION: 1100*300*270MM
ITEM WEIGHT:14KGS



LED BAR RGBW 16

IDEAL FOR BARS, DISCO HALLS, SMALL SHOWS, CABARETS, MUSIC SHOPS, MOBILE DJs, etc.

AC 90-240V 60/50HZ

IP 65

POWER: 150W, FOUR DIGITAL LED DISPLAY

Die cast alu. housing with 16*four in one RGBW 8W high MCD LEDs

LONG LIFE 100,000 HOURS

AUTO MODE AND MASTER/SLAVE,

DMX 512 PROTOCOL FUNCTIONING AS FLASH, DIMMING, SINGLE COLOR, COLOR MACROS,MIXING COLORS,COLOR FADES,ETC.

8/12/20/36/68 DMX channels

LOW POWER CONSUMPTION, LOW HEAT, LOW MAINTENANCE AND BRIGHT OUTPUT

ITEM DIMENSION: 100*7*7CM

ITEM WEIGHT: 4KGS



WARP

Electronic power supply AC 90-240V 50/60HZ

long life operation

Plug and play unit producing a unique room filling effect

Equipped with gobo wheel, inner reflector dish

black housing with high MCD white 30W LED

low heat,Long Life LEDs (100,000 hrs.)

operational Modes: Sound Active, Auto

Linkable via 3-pin XLR cable, IEC out/in on rear to daisy chain power

Dimensions:460*320*200mm

Weight:5kgs



DORIS RGB 12

Electronic power supply AC 90-240V 50/60HZ

full Master/Slave operation in any operational mode,
color strobe effect and long life operation

IP65 water proof

black molded aluminium housing with 12*three in one RGB 9W high MCD LEDs

producing various colors,red,green,blue, yellow,white,pink,purple,cyan
low heat,Long Life LEDs (100,000 hrs.)

operational Modes: DMX 512 protocol, Auto, master/slave

Color strobe effect slow to fast, electronic dimming from 0-100%

Uses 8 DMX Channels

Stand Alone,Master/Slave

Linkable via 3-pin XLR cable,hanging brackets included

4-digital LED display

ITEM DIMENSION: 260*300*180MM

ITEM WEIGHT:5KGS



DORIS RGBW 14

Electronic power supply AC 90-240V 50/60HZ

full Master/Slave operation in any operational mode,
color strobe effect and long life operation

IP65 water proof

black molded aluminium housing with 14*FOUR in one RGBW 8W high MCD LEDs

producing various colors,red,green,blue, yellow,white,pink,purple,cyan
low heat,Long Life LEDs (100,000 hrs.)

operational Modes: DMX 512 protocol, Auto, master/slave

Color strobe effect slow to fast, electronic dimming from 0-100%

Uses 9 DMX Channels

Stand Alone,Master/Slave

Linkable via 3-pin XLR cable,hanging brackets included

4-digital LED display

ITEM DIMENSION: 260*300*180MM

ITEM WEIGHT:5KGS



PAR RGB 12

Electronic power supply AC 90-240V 50/60HZ

full Master/Slave operation in any operational mode,
color strobe effect and long life operation

black housing with 12*three in one RGB 9W high MCD LEDs

producing various colors,red,green,blue, yellow,white,pink,purple,cyan
low heat,Long Life LEDs (100,000 hrs.)

operational Modes: DMX 512 protocol, Auto, sound active, master/slave

Color strobe effect slow to fast, electronic dimming from 0-100%

Uses 8 DMX Channels

Stand Alone, Master/Slave

Linkable via 3-pin XLR cable, hanging brackets included

4-digital LED display

Dimensions:300*270*240mm

Weight: 5.0 kgs



PAR RGBW 14

Electronic power supply AC 90-240V 50/60HZ

full Master/Slave operation in any operational mode,
color strobe effect and long life operation

black housing with 14*four in one RGBW 8W high MCD LEDs

producing various colors,red,green,blue, yellow,white,pink,purple,cyan
low heat,Long Life LEDs (100,000 hrs.)

operational Modes: DMX 512 protocol, Auto, sound active, master/slave

Color strobe effect slow to fast, electronic dimming from 0-100%

Uses 9 DMX Channels

Stand Alone, Master/Slave

Linkable via 3-pin XLR cable, hanging brackets included

4-digital LED display

Dimensions: 300*270*240mm

Weight: 5.0 kgs



PAR RGBW 18

Electronic power supply AC 90-240V 50/60HZ

full Master/Slave operation in any operational mode,

color strobe effect and long life operation

black housing with 18*four in one RGBW 8W high MCD LEDs

producing various colors, red, green, blue, yellow, white, pink, purple, cyan

low heat, Long Life LEDs (100,000 hrs.)

operational Modes: DMX 512 protocol, Auto, sound active, master/slave

Color strobe effect slow to fast, electronic dimming from 0-100%

Uses 9 DMX Channels

Stand Alone, Master/Slave

Linkable via 3-pin XLR cable, hanging brackets included

4-digital LED display

Dimensions: 300*270*240mm

Weight: 5.0 kgs



TRLD-718 RGBW

LED NISAEA RGBW

Electronic power supply AC 88-264V 47-63HZ

full Master/Slave operation in any operational mode,

Electronic Dimming, color strobe effect and long life operation

black ABS housing with 7*8W four in one RGBW high MCD LEDs

Smooth RGBW color mixing

low heat, Long Life LEDs (100,000 hrs.)

operational Modes: DMX 512 protocol, Sound Active, Auto, master/slave

Beam Angle: 25° / 45° degrees

Color strobe effect

Uses 9 DMX Channels
Stand Alone, Master/Slave
Linkable via 3-pin XLR cable
Electronic Dimming: 0-100%
ITEM DIMENSION: 220*130*130MM
ITEM WEIGHT: 2.5KGS



LED PAR 56 UV 3W

DU hanging brackets for easy floor standing

Electronic power supply AC 88-264V 47-63HZ

full Master/Slave operation in any operational mode,

Electronic Dimming, color strobe effect and long life operation

short silver/black housing Par 56 with 36*3W UV ultraviolet LEDs

Smooth color mixing

low heat, Long Life LEDs (100,000 hrs.)

operational Modes: DMX 512 protocol, Sound Active, Auto, master/slave

Beam Angle: 25° degrees

Color strobe effect

Uses 5 DMX Channels

Stand Alone, Master/Slave

Linkable via 3-pin XLR cable

Electronic Dimming: 0-100%

Dimensions: 250*225*195mm

Weight: 1.9 kgs



GALAXI

Electronic power supply AC 90-240V 50/60HZ

full Master/Slave operation in any operational mode,

color strobe effect and long life operation

black housing with 6*three in one RGB 9W high MCD LEDs

producing various colors,red,green,blue, yellow,white,pink,purple,cyan

high quality step motors for smooth scanning

low heat,Long Life LEDs (100,000 hrs.)

operational Modes: DMX 512 protocol, Sound Active, Auto, master/slave

Color strobe effect slow to fast, electronic dimming from 0-100%

Uses 22 DMX Channels

Stand Alone,Master/Slave

Linkable via 3-pin XLR cable,hanging brackets included

IEC out/in on rear to daisy chain power optional

4-digital LED display

ITEM DIMENSION: 540*500*180MM

ITEM WEIGHT:9KGS



TRITON RGB 15

Electronic power supply AC 90-240V 50/60HZ

full Master/Slave operation in any operational mode,

color strobe effect and long life operation

black molded aluminium housing

with 15*three in one RGB 15W high MCD LEDs

IP 65 waterproof level

producing various colors,red,green,blue, yellow,white,pink,purple,cyan

low heat,Long Life LEDs (100,000 hrs.)

operational Modes: DMX 512 protocol, Auto, master/slave

Color strobe effect slow to fast, electronic dimming from 0-100%

Uses 8 DMX Channels

Stand Alone,Master/Slave

Linkable via 3-pin XLR cable,hanging brackets included

4-digital LED display

ITEM DIMENSION: 410*230*180MM

ITEM WEIGHT:5KGS



REVO VIII

Electronic power supply AC 90-240V 50/60HZ

PS/2 keyboard in rear to input letters and characters

10 built-in phrases(happy holidays, happy birthday,etc.)

10 phrases can be edited as desired up to 60 letters

10 animation shows, 10 preset effects

full Master/Slave operation in any operational mode,
color strobe effect and long life operation

black housing with 256 5mm high MCD LEDs (86 Red, 85 Green,85 Blue LEDs)

256 sharp red/green/blue beams to form rich led patterns that may be projected on a wall, ceiling or dance floor

4-digit led display

low heat,Long Life LEDs (100,000 hrs.)

operational Modes: DMX 512 protocol, Sound Active, Auto, master/slave

Beam Angle:15° degrees

Color strobe effect from slow to fast

Uses 4 or 256 DMX Channels

Stand Alone,Master/Slave

Linkable via 3-pin XLR cable, IEC out/in on rear to daisy chain power optional

Dimensions: 420*380*370mm

Weight: 5 kgs



MINOS LED WASH/PINSPOT

Electronic power supply AC 90-240V 50/60HZ

full Master/Slave operation in any operational mode,

led wash/color strobe effect and long life operation including **5mm high MCD LEDs (45 Red, 45 Green, 45 Blue LEDs)**

led pinspot including **4* three in one RGB 9W high MCD LEDs**

producing pinspot effects

4-digit led display

low heat, Long Life LEDs (100,000 hrs.)

operational Modes: DMX 512 protocol, Sound Active, Auto, master/slave

Color strobe effect from slow to fast

Uses 20 DMX Channels

Stand Alone, Master/Slave

Linkable via 3-pin XLR cable, IEC out/in on rear to daisy chain power optional

Dimensions: 540*145*265mm

Weight: 4 kgs



LED ALL-IN-ONE SYSTEM

IDEAL FOR BARS, DISCO HALLS, SMALL SHOWS, CABARETS, MUSIC SHOPS, MOBILE DJs, etc.

The system easy to set up and take down

System includes:

A. 4* fixtures including 36*1W high MCD LEDs (12 Red, 12 Green, 12 Blue LEDs)

Electronic power supply AC 90-240V 50-60HZ

full Master/Slave operation in any operational mode,

Electronic Dimming, color strobe effect and long life operation
Smooth RGB color mixing
low heat,Long Life LEDs (100,000 hrs.)
operational Modes: DMX 512 protocol, Sound Active, Auto, master/slave

Beam Angle:25 degrees

Uses 8 DMX Channels
Stand Alone,Master/Slave
Linkable via 3-pin XLR cable
Electronic Dimming: 0-100%
Single par can dimensions:250*225*195mm

Weight: 1.9 kgs

B. Foot controller: blackout/all on/function: sound active,auto/speed

C.light stand: extending up to 3 meters

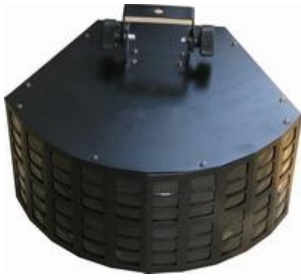


DERBY I

Electronic power supply AC 90-240V 50/60HZ
full Master/Slave operation in any operational mode,
color strobe effect and long life operation
multi-colored, bright four color beams shooting from 14 lens covering a large area
producing various colors red,green, blue, white, purple, cyan, yellow
smooth step motor for superior beam movement

black housing with 2*four in one high RGBW 10W MCD LEDs, total 20W

4-digit led display
low heat,Long Life LEDs (100,000 hrs.)
operational Modes: DMX 512 protocol, Sound Active, Auto, master/slave
Color strobe effect from slow to fast
Uses 8 DMX Channels
Stand Alone,Master/Slave
Linkable via 3-pin XLR cable, IEC out/in on rear to daisy chain power
Dimensions: 269*271*140mm
Weight: 4.1kgs



DERBY II

Electronic power supply AC 90-240V 50/60HZ

full Master/Slave operation in any operational mode,

color strobe effect and long life operation

multi-colored, bright four color beams shooting from 60 lens covering a large area

producing various colors red, green, blue, white, purple, cyan, yellow

smooth step motor for superior beam movement

black housing with 2*three in one high RGB 9W MCD LEDs+2* high MCD white 3W LEDs, total 24W

4-digit led display

low heat, Long Life LEDs (100,000 hrs.)

operational Modes: DMX 512 protocol, Sound Active, Auto, master/slave

Color strobe effect from slow to fast

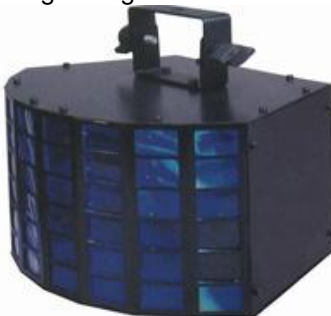
Uses 8 DMX Channels

Stand Alone, Master/Slave

Linkable via 3-pin XLR cable, IEC out/in on rear to daisy chain power

Dimensions: 320*370*230mm

Weight: 5kgs



DERBY III

Electronic power supply AC 90-240V 50/60HZ

full Master/Slave operation in any operational mode,

color strobe effect and long life operation

multi-colored, bright four color beams shooting from 48 lens covering a large area

producing various colors red, green, blue, white, purple, cyan, yellow

smooth step motor for superior beam movement

black housing with 2*three in one high RGB 9W MCD LEDs+2* high MCD white 3W LEDs, total 24W

4-digit led display

low heat, Long Life LEDs (100,000 hrs.)

operational Modes: DMX 512 protocol, Sound Active, Auto, master/slave

Color strobe effect from slow to fast

Uses 8 DMX Channels

Stand Alone, Master/Slave

Linkable via 3-pin XLR cable, IEC out/in on rear to daisy chain power
Dimensions: 301*236*260mm
Weight: 5kgs



DERBY IV

Electronic power supply AC 90-240V 50/60HZ

full Master/Slave operation in any operational mode,
color strobe effect and long life operation

multi-colored, bright four color beams shooting from 40 lens covering a large area
producing various colors red, green, blue, white, purple, cyan, yellow
smooth step motor for superior beam movement

**black housing with 2*three in one high RGB 9W MCD LEDs+2* high MCD
white 3W LEDs, total 24W**

4-digit led display

low heat, Long Life LEDs (100,000 hrs.)

operational Modes: DMX 512 protocol, Sound Active, Auto, master/slave

Color strobe effect from slow to fast

Uses 8 DMX Channels

Stand Alone, Master/Slave

Linkable via 3-pin XLR cable, IEC out/in on rear to daisy chain power

Dimensions: 281*252*261mm

Weight: 4.5kgs



TRLD-623

AETHER VI

Electronic power supply AC 90-240V 50/60HZ

full Master/Slave operation in any operational mode,
color strobe effect and long life operation

**black housing with 192 5mm high MCD LEDs (48 Red, 48 Green, 48 Blue,
48 White LEDs)**

192 sharp red/green/blue/white beams to form LED moonflower effects

4-digit led display

low heat, Long Life LEDs (100,000 hrs.)

operational Modes: DMX 512 protocol, Sound Active, Auto, master/slave

Beam Angle:15° degrees

Color strobe effect from slow to fast

Uses 7 DMX Channels

Stand Alone,Master/Slave

Linkable via 3-pin XLR cable, IEC out/in on rear to daisy chain power

Dimensions: 540*210*190mm

Weight: 5 kgs



HEXAD

Electronic power supply AC 90-240V 50/60HZ

full Master/Slave operation in any operational mode,

color strobe effect and long life operation

multi-colored, bright four color beams shooting from 6 lens covering a large area

producing various colors red,green, blue, white, purple, cyan, yellow

smooth step motor for superior beam movement

black housing with 2*three in one high RGB 9W MCD LEDs+2* high MCD white 3W LEDs, total 24W

4-digit led display

low heat,Long Life LEDs (100,000 hrs.)

operational Modes: DMX 512 protocol, Sound Active, Auto, master/slave

Color strobe effect from slow to fast

Uses 8 DMX Channels

Stand Alone,Master/Slave

Linkable via 3-pin XLR cable, IEC out/in on rear to daisy chain power

Dimensions: 240*230*240mm

Weight: 3kgs



ROTO BALLS

Electronic power supply AC 90-240V 50/60HZ

full Master/Slave operation in any operational mode,

color strobe effect and long life operation

multi-colored, bright four color beams shooting from 24 lens covering a large area

producing various colors red,green, blue, white, purple, cyan, yellow

long life operation

24 beams projecting to the beat of music, color change and strobe

black housing with 4*three in one high RGB 3W MCD LEDs, total 12W

low heat, Long Life LEDs (100,000 hrs.)

operational Modes: Sound Active, Auto, DMX 512, MASTER/SLAVE

Stand Alone, Master/Slave

Linkable via 3-pin XLR cable

IEC out/in on rear to daisy chain power optional

Dimensions: 561*231*296mm

Weight: 4.8kgs



STAR BALL

Electronic power supply AC 90-240V 50/60HZ

long life operation

60 beams projecting to the beat of music, color change and strobe

black housing with 4*three in one high RGB 3W MCD LEDs, total 12W

low heat, Long Life LEDs (100,000 hrs.)

operational Modes: Sound Active, Auto

Dimensions: 480*350*220mm

Weight: 5kgs



MAGIC BALL

Electronic power supply AC 90-240V 50/60HZ

long life operation

26 beams projecting to the beat of music, color change and strobe

black housing with 1*four in one high RGBW 10W MCD LEDs

low heat, Long Life LEDs (100,000 hrs.)

operational Modes: Sound Active, Auto

Dimensions: 270*180*180mm

Weight: 2kgs



MAGIC BALL II

Electronic power supply AC 90-240V 50/60HZ

long life operation

39 beams projecting to the beat of music, color change and strobe

black housing with 1*four in one high RGBW 10W MCD LEDs

low heat, Long Life LEDs (100,000 hrs.)

operational Modes: Sound Active, Auto

Dimensions: 210*210*290mm

Weight: 2.5kgs



VERTIGO II

Electronic power supply AC 90-240V 50/60HZ

long life operation

19 beams projecting to the beat of music, color change and strobe, multi-colored, bright five color beams shooting from 19 lens covering a large area

producing various colors red, green, blue, white, purple, cyan, yellow

long life operation

black housing with 4*high MCD LEDs: RED 5W, GREEN 5W, BLUE 5W, WHITE 5W, TOTAL 20W

operational Modes: Sound Active, Auto, DMX 512, MASTER/SLAVE

Stand Alone, Master/Slave
Linkable via 3-pin XLR cable
IEC out/in on rear to daisy chain power optional
low heat, Long Life LEDs (100,000 hrs.)
Dimensions: 461*311*311mm
Weight: 4kgs



LED PRO 64 S 1 WITH LITHIUM BATTERY

DU hanging brackets for easy floor standing

Electronic power supply AC 88-264V 47-63HZ

With lithium battery:

DC Power Supply: inside fixed the housing a chargeable DC battery supply so you could still use while there is no AC power provided, unit can be used for 6-8 hours if the battery fully charged

Wireless receiver pre-installed: No time-consuming on signal cable connection and trouble shooting on defective cables

full Master/Slave operation in any operational mode,

Electronic Dimming, color strobe effect and long life operation

short silver/black housing Par 64 with 18*1W high MCD LEDs (6 Red, 6 Green, & 6 Blue LEDs)

Smooth RGB color mixing

low heat, Long Life LEDs (100,000 hrs.)

operational Modes: DMX 512 protocol, Sound Active, Auto, master/slave

Beam Angle: 15 degrees

Color strobe effect

Uses 8 DMX Channels

Stand Alone, Master/Slave

Linkable via 3-pin XLR cable

Electronic Dimming: 0-100%

Dimensions: 300*270*240mm

Weight: 5.0 kgs



TRIAD

Electronic power supply AC 90-240V 50/60HZ

long life operation

precise constant current/voltage output electronic power supply fixed

Plug and play unit producing a unique room filling effect

Ultra Bright LED Gobo flower with dichroic prism effect

Equipped with gobo wheel, inner reflector dish and a 3 facet prism

black housing with high MCD white 60W LED

OR black housing with high MCD white 30W LED

low heat, Long Life LEDs (100,000 hrs.)

operational Modes: Sound Active, Auto

IEC out/in on rear to daisy chain power optional

Dimensions: 292*255*193mm

Weight: 4kgs



WARP

Electronic power supply AC 90-240V 50/60HZ

long life operation

precise constant current/voltage output electronic power supply fixed

Plug and play unit producing a unique room filling effect

Equipped with gobo wheel, inner reflector dish

black housing with high MCD white 30W LED

low heat, Long Life LEDs (100,000 hrs.)

operational Modes: Sound Active, Auto

Linkable via 3-pin XLR cable,

IEC out/in on rear to daisy chain power optional

Dimensions: 460*320*200mm

Weight: 5kgs



TRLD-717

LED LETO

Electronic power supply AC 90-240V 50/60HZ

full Master/Slave operation in any operational mode,

color strobe effect and long life operation

black housing with 300 10mm high MCD LEDs (60 Red, 60 Green, 60 Blue, 60 White, 60 Amber LEDs)

or black housing with 288 10mm high MCD LEDs (48 Red, 120 Green, 120 Blue LEDs)

or black housing with 288 10mm high MCD LEDs (288 White LEDs)

or black housing with 288 10mm high MCD LEDs (288 10mm UV LEDs)

4-digit led display

low heat, Long Life LEDs (100,000 hrs.)

operational Modes: DMX 512 protocol, Sound Active, Auto, master/slave

Beam Angle: 25° degrees

Color strobe effect from slow to fast

Uses 10/8/6 DMX Channels

Stand Alone, Master/Slave

Linkable via 3-pin XLR cable, IEC out/in on rear to daisy chain power optional

Dimensions: 360*250*80mm

Weight: 5 kgs



TOP 575 CMY SPOT

AC 100-120V 60HZ, AC 200-240V 50HZ

Colour-wheel with 7 different, dichroic colour-filters and white, Rainbow-effect in both directions;

6 good quality CMY color filters with each two pcs to mix thousands of colors

CMY color mixing with CMY mixing speed adjustments

Gobo-wheel 1 with 6 static metal-gobos and open

Gobo-wheel 2 with 4 interchangeable rotating gobos plus spot(2 glass gobos)

Gobo indexing

The rotating gobos can be turned by 360°

High-speed rotating 4-facet prism, static 4-facet prism, wash effects

shutter/dimmer unit allowing very smooth dimming and strobe effect 1-10 flash per sec.

Blue LCD display, receiving DMX values

Remote reset function, lamp on/off via controller, blackout

Silent fans cooling, fans speed automatic adjustments per the temperature inside

25 DMX-channels each DMX channel function can be achieved by LCD display setting

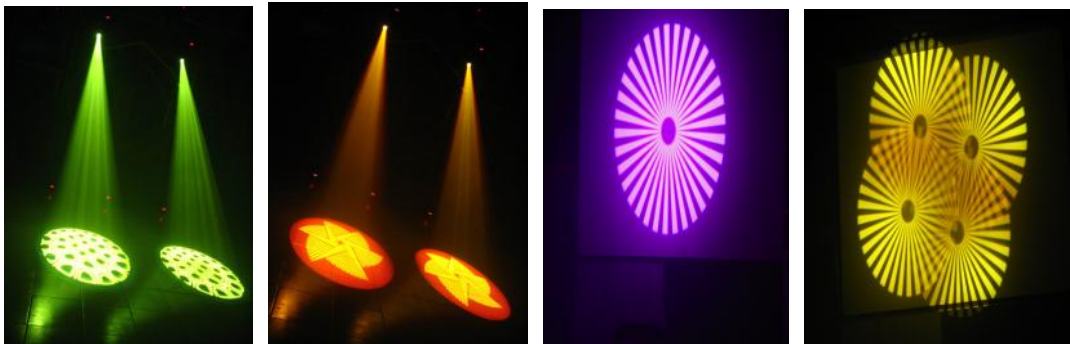
Pan-movement range 530°

Tilt-movement range 280°

Pan/tilt 16 fine bit with automatic Pan/Tilt position correction and Pan/Tilt blackout upon moving

High luminous-efficiency parabolic mirror and double condenser system

Motorized zooming controllable via DMX from 15 degrees to 28degrees
 Motorized focus controllable via DMX
 Steplessly adjustable iris, all lenses are anti-reflection coated
 For OSRAM HMI 575W/GS
 Dimension: 380x430x520mm
 Weight (net): 35.0 kg



TOP 575 SPOT

AC 100-120V 60HZ, AC 200-240V 50HZ

Colour-system: Colour-wheel with 7 different, dichroic colour-filtres and white, Rainbow-effect in both directions

Gobo-wheel 1 with 7 static metal-gobos and open

Gobo-wheel 2 with 7 rotating gobos plus spot(2 glass gobos)

The rotating gobos can be turned by 360°, the adjusted position is memorized

High-speed rotating 4-facet prism

shutter/dimmer unit allowing very smooth dimming and strobe effect 1-10 flash per sec.

LED display, receiving DMX values

Remote reset function

Silent fans cooling

16 DMX-channels each DMX channel function can be achieved by LED display setting

Pan-movement range 530°

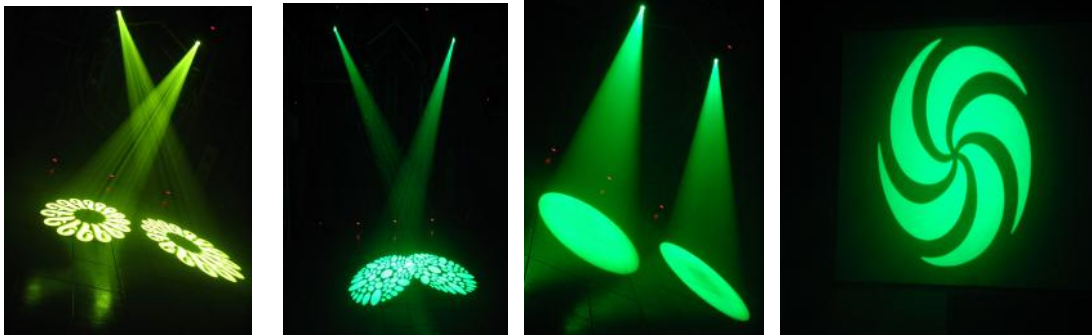
Tilt-movement range 280°

High luminous-efficiency parabolic mirror and double condenser system

Motorized focus controllable via DMX

Steplessly adjustable iris, all lenses are anti-reflection coated

For OSRAM HMI 575W/GS
Dimension: 400x380x460mm
Weight (net): 29.0 kg



TOP 250 SPOT

AC 100-120V 60HZ, AC 200-240V 50HZ

Colour-system: Colour-wheel with 7 different, dichroic colour-filters and white

Rainbow-effect in both directions

Gobo-wheel with 7 interchangeable rotating gobos and open (two glass gobos)

The rotating gobos can be turned by 360°, the adjusted position is memorized

High-speed rotating 4-facet prism • shutter/dimmer unit allowing very smooth dimming and strobe effect 1-10 flash per sec.

LED display • Readout fixture, receiving DMX values

Remote reset function • Silent fans cooling

14 DMX-channels

each DMX channel function can be achieved by LED display setting

Pan-movement range 530°

Tilt-movement range 280°

High luminous-efficiency parabolic mirror and double condenser system

Motorized focus controllable via DMX

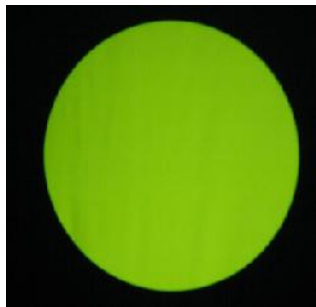
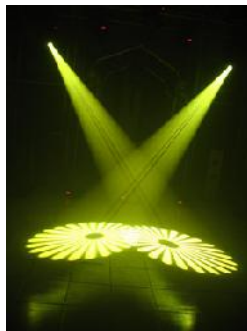
All lenses are anti-reflection coated

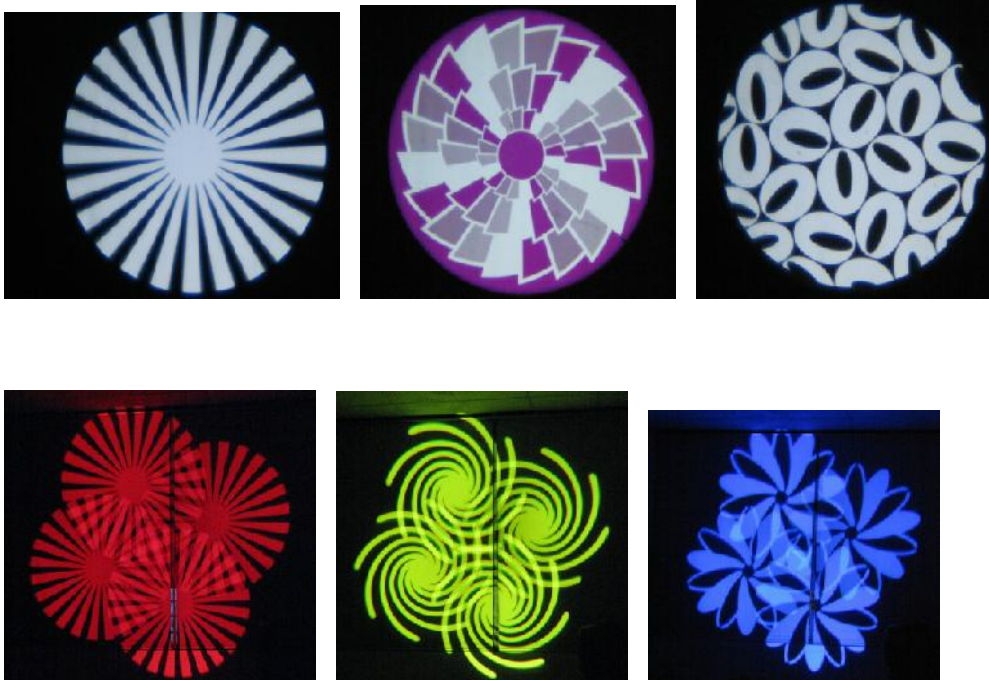
For PHILIPS MSD 250/2 lamp

Dimension: 420x410x490mm

Weight (net): 22.0 kg

*****LED YOKE LIGHTING**

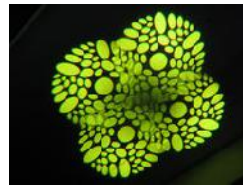




TALOS LED SPOT

the crystallization of wisdom and science and embody all concepts and minds of designers. Firstly dodging and shunning the prevalent trends: the over fat profile in aesthetic sense and introduce and exercise the simplest aesthetic principle of industry civilization: simple and economical. looking dignified, sedate with clear cut lines and contours, and present you with first impression: small and exquisite, passion, optimism and heroism. Secondly set of new ideas and trails are blazed in structuring, electronic and microprocessing. Compactly laid out, no more space to spare, well organized optical system making double brighter than the corresponding ones.

powered by a high output 60W long life white LED source
 (6500°K, 50,000 hr.) with a low power draw of 150W.
 60W High Output LED Moving Head that produces a spot effect
 4 operational modes: DMX, Master/Slave, Stand Alone & Sound Active
 7 Colors + White,Independent gobo and color wheels,12 Ch. DMX Modes
 7 Rotating, Interchangeable Gobos + Spot (5 metal + 2 glass gobos)
 Tilt: 270-degree,LCD DMX menu system
 Prism Wheel: 4-Facet,auto Pan/Tilt repositioning
 Dimming: 0% - 100%
 16-degree beam angle,Remote Focus
 Hanging bracket included,3-pin XLR In/Out
 Fan cooled,Shutter: Pulse effect; random strobe slow to fast
 Flicker-free operation,Multi-voltage Operation: 90-260V, 50Hz/60Hz
 Strobe effect,Pan: 540-degree standard/tilt:280-degree
 Stepper motors with micro stepping
 Power Consumption: 150W max
 Lamp: 60W white LED source, 6500°K (50,000 hours rated)
 Dimensions (LxWxH): 420*410*490mm
 Weight: 12kgs



LED SPOT 90

AC 100-120V 60HZ, AC 200-240V 50HZ

Similar to HMI 575W/GS lamp

Moving Head Fixture features a 100W high output, long life white LED source (6500K, 50,000 hr.). This unit is compact & light weight and offers plenty of pro features such as: 7 Dichroic Colors + white, 7 Rotating Gobos (Interchangeable) a Prism Wheel with 4-facet, Gobo Indexing, Dimming (0-100%), Strobe effect, 16 DMX channels and a Gobo Scroll mode.

Colour-system: Colour-wheel with 7 different, dichroic colour-filters and white, Rainbow-effect in both directions

Gobo-wheel 1 with 7 static metal-gobos and open

Gobo-wheel 2 with 7 rotating gobos plus spot (2 glass gobos)

The rotating gobos can be turned by 360°, the adjusted position is memorized

High-speed rotating 4-facet prism

shutter/dimmer unit allowing very smooth dimming and strobe effect 1-10 flash per sec.

LED display, receiving DMX values

Remote reset function

Silent fans cooling

16 DMX-channels each DMX channel function can be achieved by LCD display setting

Pan-movement range 530°, Tilt-movement range 280°

auto Pan/Tilt repositioning, High luminous-efficiency parabolic mirror and double condenser system

Motorized focus controllable via DMX
Steplessly adjustable iris, all lenses are anti-reflection coated
Dimension: 400x380x460mm
Weight (net): 20.0 kg



LED MOVING WASH 48*8W RGBW

AC 100-120V 60HZ, AC 200-240V 50HZ
Moving Head Fixture features 48 pcs of 4 in 1 8W high output, long life LED source. This unit is compact & light weight and offers plenty of pro features such as: Extremely Long Life: 100,000 hr and low power consumption
DMX channel: 14 channels
3 operational modes: DMX-512, Master/Slave & Sound Active
Pan movement: 540°/630° optional (16 bit)
Tilt movement: 265° (16 bit)
Strobe effect with 1-25 flashes per second and pulse effect
General dimming and blackout for all four colors
Excellent color mixing and rainbow effect
Friendly blue LCD display
Preset program: 8 built in programs can be called up via DMX controller
Beam angle: 25/45°



LED MOVING WASH 108*3W

AC 100-120V 60HZ, AC 200-240V 50HZ
Moving Head Fixture features , **high MCD 3W ILEDs 108 pcs with red/green/blue/white each 24/30/30/24 pcs, or 108 pcs with red/green/blue each 36/36/36 pcs**, long life LED source. This unit is compact & light weight and offers plenty of pro features such as: Extremely Long Life: 100,000 hr and low power consumption
DMX channel: 14 channels
3 operational modes: DMX-512, Master/Slave & Sound Active

Pan movement: 540°/630° optional (16 bit)
 Tilt movement: 265° (16 bit)
 Strobe effect with 1-25 flashes per second and pulse effect
 General dimming and blackout for all three colors
 Excellent color mixing and rainbow effect
 Friendly blue LCD display
 Preset program: 8 built in programs can be called up via DMX controller
 Beam angle: 25/45°



LED PAR 64 168-10 L

DU hanging brackets for easy floor standing

Multi-voltage operation: AC 120V-230V 50/60Hz
 full Master/Slave operation in any operational mode,

Electronic Dimming, color strobe effect and long life operation

long silver/black housing Par 64 with 168 10mm high MCD LEDs (56 Red, 56Green, & 56 Blue LEDs)

Smooth RGB color mixing

low heat, Long Life LEDs (100,000 hrs.)

operational Modes: DMX 512 protocol, Sound Active, Auto, master/slave

Beam Angle: 15 degrees

Color strobe effect

Uses 8 DMX Channels

Stand Alone, Master/Slave

Linkable via 3-pin XLR cable

Electronic Dimming: 0-100%

Dimensions: 425*270*240mm

Weight: 2.3 kgs



LED PAR 64 168-10 S

DU hanging brackets for easy floor standing

Multi-voltage operation: AC 120V-230V 50/60Hz

full Master/Slave operation in any operational mode,

Electronic Dimming, color strobe effect and long life operation

short silver/black housing Par 64 with 168 10mm high MCD LEDs (56 Red, 56Green, & 56 Blue LEDs)

Smooth RGB color mixing

low heat,Long Life LEDs (100,000 hrs.)

operational Modes: DMX 512 protocol, Sound Active, Auto, master/slave

Beam Angle:30 degrees

Color strobe effect

Uses 8 DMX Channels

Stand Alone,Master/Slave

Linkable via 3-pin XLR cable

Electronic Dimming: 0-100%

Dimensions:300*270*240mm

Weight: 2.0 kgs



LED PAR 56 168-5 S/ LED PAR 56 168-10 S

DU hanging brackets for easy floor standing

Multi-voltage operation: AC 120V-230V 50/60Hz

full Master/Slave operation in any operational mode,

Electronic Dimming, color strobe effect and long life operation

short silver/black housing Par 56 with 168 10mm high MCD LEDs (56 Red, 56Green, & 56 Blue LEDs)

Or with 168 5mm high MCD LEDs (56 Red, 56Green, & 56 Blue LEDs)

Smooth RGB color mixing

low heat,Long Life LEDs (100,000 hrs.)

operational Modes: DMX 512 protocol, Sound Active, Auto, master/slave

Beam Angle:40 degrees

Color strobe effect

Uses 8 DMX Channels

Stand Alone,Master/Slave

Linkable via 3-pin XLR cable

Electronic Dimming: 0-100%

Dimensions:250*225*195mm

Weight: 1.9 kgs



LED PAR 64 204-10 S

DU hanging brackets for easy floor standing

Multi-voltage operation: AC 120V-230V 50/60Hz

full Master/Slave operation in any operational mode,

Electronic Dimming, color strobe effect and long life operation

short silver/black housing Par 64 with 204 10mm high MCD LEDs (68 Red, 68Green, & 68 Blue LEDs)

OR short silver/black housing Par 64 with 204 10mm high MCD LEDs (51 Red, 51Green, 51 Blue & 51 White LEDs)

Smooth RGBW color mixing

low heat,Long Life LEDs (100,000 hrs.)

operational Modes: DMX 512 protocol, Sound Active, Auto, master/slave

Beam Angle:30 degrees

Color strobe effect

Uses 8/9 DMX Channels

Stand Alone,Master/Slave

Linkable via 3-pin XLR cable

Electronic Dimming: 0-100%

Dimensions:300*270*240mm

Weight: 2.0 kgs



LED PAR 64 18-1W S

DU hanging brackets for easy floor standing

Electronic power supply AC 88-264V 47-63HZ

full Master/Slave operation in any operational mode,

Electronic Dimming, color strobe effect and long life operation

short silver/black housing Par 64 with 18*1W high MCD LEDs (6 Red, 6Green, & 6 Blue LEDs)

Smooth RGB color mixing

low heat,Long Life LEDs (100,000 hrs.)

operational Modes: DMX 512 protocol, Sound Active, Auto, master/slave

Beam Angle:15 degrees

Color strobe effect

Uses 8 DMX Channels

Stand Alone,Master/Slave

Linkable via 3-pin XLR cable

Electronic Dimming: 0-100%

Dimensions:300*270*240mm

Weight: 3.0 kgs

LED PAR 64 18-3W S

DU hanging brackets for easy floor standing

Electronic power supply AC 88-264V 47-63HZ

full Master/Slave operation in any operational mode,

Electronic Dimming, color strobe effect and long life operation

short silver/black housing Par 64 with 18*3W high MCD LEDs (6 Red, 6Green, & 6 Blue LEDs)

Smooth RGB color mixing

low heat,Long Life LEDs (100,000 hrs.)

operational Modes: DMX 512 protocol, Sound Active, Auto, master/slave

Beam Angle:15 degrees

Color strobe effect

Uses 8 DMX Channels

Stand Alone,Master/Slave

Linkable via 3-pin XLR cable

Electronic Dimming: 0-100%
Dimensions:300*270*240mm
Weight: 3.0 kgs

LED PAR 64 18-5W S

DU hanging brackets for easy floor standing

Electronic power supply AC 88-264V 47-63HZ

full Master/Slave operation in any operational mode,

Electronic Dimming, color strobe effect and long life operation

short silver/black housing Par 64 with 18*5W high MCD LEDs (6 Red, 6Green, & 6 Blue LEDs)

Smooth RGB color mixing

low heat,Long Life LEDs (100,000 hrs.)

operational Modes: DMX 512 protocol, Sound Active, Auto, master/slave

Beam Angle:15 degrees

Color strobe effect

Uses 8 DMX Channels

Stand Alone,Master/Slave

Linkable via 3-pin XLR cable

Electronic Dimming: 0-100%

Dimensions:300*270*240mm

Weight:3.50 kgs



LED PAR 64 18 RGB 3W S

DU hanging brackets for easy floor standing

Electronic power supply AC 88-264V 47-63HZ

full Master/Slave operation in any operational mode,

Electronic Dimming, color strobe effect and long life operation

short silver/black housing Par 64 with 18 THREE IN ONE 3W high MCD LEDs

Smooth RGB color mixing

low heat, Long Life LEDs (100,000 hrs.)

operational Modes: DMX 512 protocol, Sound Active, Auto, master/slave

Beam Angle:15 degrees

Color strobe effect

Uses 8 DMX Channels

Stand Alone, Master/Slave

Linkable via 3-pin XLR cable

Electronic Dimming: 0-100%

Dimensions: 300*270*240mm

Weight: 3.50 kgs



LED PAR 64 18-1W RGBW S

DU hanging brackets for easy floor standing

Electronic power supply AC 88-264V 47-63HZ

full Master/Slave operation in any operational mode,

Electronic Dimming, color strobe effect and long life operation

short silver/black housing Par 64 with 18*1W high MCD LEDs (5 Red, 5Green, 4 Blue & 4 White LEDs)

Smooth RGBW color mixing

low heat, Long Life LEDs (100,000 hrs.)

operational Modes: DMX 512 protocol, Sound Active, Auto, master/slave

Beam Angle:15 degrees

Color strobe effect

Uses 8 DMX Channels

Stand Alone, Master/Slave

Linkable via 3-pin XLR cable

Electronic Dimming: 0-100%

Dimensions: 300*270*240mm

Weight: 3.0 kgs



LED PAR 64 18-3W RGBW S

DU hanging brackets for easy floor standing

Electronic power supply AC 88-264V 47-63HZ

full Master/Slave operation in any operational mode,

Electronic Dimming, color strobe effect and long life operation

short silver/black housing Par 64 with 18*3W high MCD LEDs (5 Red, 5Green, 4 Blue & 4 White LEDs)

Smooth RGBW color mixing

low heat,Long Life LEDs (100,000 hrs.)

operational Modes: DMX 512 protocol, Sound Active, Auto, master/slave

Beam Angle:15 degrees

Color strobe effect

Uses 8 DMX Channels

Stand Alone,Master/Slave

Linkable via 3-pin XLR cable

Electronic Dimming: 0-100%

Dimensions:300*270*240mm

Weight: 3.0 kgs



LED PAR 38 9-1W RGB

Electronic power supply AC 88-264V 47-63HZ

full Master/Slave operation in any operational mode,

Electronic Dimming, color strobe effect and long life operation

silver/black housing Par 38 with 9*1W high MCD LEDs (3 Red, 3Green, 3 Blue LEDs)

Smooth RGBW color mixing

low heat,Long Life LEDs (100,000 hrs.)

operational Modes: DMX 512 protocol, Sound Active, Auto, master/slave

Beam Angle:15° /25° /30° /45° degrees

Color strobe effect

Uses 8 DMX Channels

Stand Alone, Master/Slave
Linkable via 3-pin XLR cable
Electronic Dimming: 0-100%
Dimensions: 200*150*150mm
Weight: 1.5 kgs

LED PAR 38 9-1W WHITE

Electronic power supply AC 88-264V 47-63HZ

full Master/Slave operation in any operational mode,
Electronic Dimming, color strobe effect and long life operation

silver/black housing Par 38 with 9*1W high MCD WHITE LEDs (9 White LEDs)

Smooth white color outputs

low heat, Long Life LEDs (100,000 hrs.)

operational Modes: DMX 512 protocol, Sound Active, Auto, master/slave

Beam Angle: 15° / 25° / 30° / 45° degrees

Color strobe effect

Uses 8 DMX Channels

Stand Alone, Master/Slave

Linkable via 3-pin XLR cable

Electronic Dimming: 0-100%

Dimensions: 200*150*150mm

Weight: 1.5 kgs

LED PAR 38 61 RGB

Electronic power supply AC 88-264V 47-63HZ

full Master/Slave operation in any operational mode,
Electronic Dimming, color strobe effect and long life operation

silver/black housing Par 38 with 61 10mm or 5mm high MCD LEDs (21 Red, 20 Green, 20 Blue LEDs)

Smooth RGB color mixing

low heat, Long Life LEDs (100,000 hrs.)

operational Modes: DMX 512 protocol, Sound Active, Auto, master/slave

Beam Angle: 15° / 25° / 30° / 45° degrees

Color strobe effect

Uses 8 DMX Channels

Stand Alone, Master/Slave

Linkable via 3-pin XLR cable

Electronic Dimming: 0-100%

Dimensions: 200*150*150mm

Weight: 1.0 kgs

LED PAR 38 75 RGB

Electronic power supply AC 88-264V 47-63HZ

full Master/Slave operation in any operational mode,
Electronic Dimming, color strobe effect and long life operation

silver/black housing Par 38 with 75 10mm or 5mm high MCD LEDs (15 Red, 30 Green, 30 Blue LEDs)

Smooth RGB color mixing

low heat, Long Life LEDs (100,000 hrs.)

operational Modes: DMX 512 protocol, Sound Active, Auto, master/slave

Beam Angle: 15° / 25° / 30° / 45° degrees

Color strobe effect

Uses 8 DMX Channels

Stand Alone, Master/Slave

Linkable via 3-pin XLR cable

Electronic Dimming: 0-100%
Dimensions: 200*150*150mm
Weight: 1.0 kgs



TRLD-718 RGB

LED NISAEA RGB

Electronic power supply AC 88-264V 47-63HZ

full Master/Slave operation in any operational mode,
Electronic Dimming, color strobe effect and long life operation

black ABS housing with 18*1W high MCD LEDs (6 Red, 6 Green, 6 Blue LEDs)

Smooth RGB color mixing

low heat, Long Life LEDs (100,000 hrs.)

operational Modes: DMX 512 protocol, Sound Active, Auto, master/slave

Beam Angle: 15° / 25° / 30° / 45° degrees

Color strobe effect

Uses 8 DMX Channels

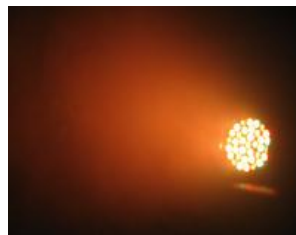
Stand Alone, Master/Slave

Linkable via 3-pin XLR cable

Electronic Dimming: 0-100%

ITEM DIMENSION: 220*130*130MM

ITEM WEIGHT: 2.5KGS



LED PAR 64 36 S

DU hanging brackets for easy floor standing

Electronic power supply AC 88-264V 47-63HZ

full Master/Slave operation in any operational mode,

Electronic Dimming, color strobe effect and long life operation

short silver/black housing Par 64 with 36*1W or 3W high MCD LEDs (12 Red, 12 Green, 12 Blue LEDs)

Smooth RGB color mixing

low heat, Long Life LEDs (100,000 hrs.)

operational Modes: DMX 512 protocol, Sound Active, Auto, master/slave

Beam Angle: 15° / 25° / 30° / 45° degrees

Color strobe effect

Uses 8 DMX Channels

Stand Alone, Master/Slave

Linkable via 3-pin XLR cable

Electronic Dimming: 0-100%

Dimensions: 300*270*240mm

Weight: 3 kgs

LED PAR 64 36 L

DU hanging brackets for easy floor standing

Electronic power supply AC 88-264V 47-63HZ

full Master/Slave operation in any operational mode,

Electronic Dimming, color strobe effect and long life operation

long silver/black housing Par 64 with 36*1W or 3W high MCD LEDs (12 Red, 12 Green, 12 Blue LEDs)

Smooth RGB color mixing

low heat, Long Life LEDs (100,000 hrs.)

operational Modes: DMX 512 protocol, Sound Active, Auto, master/slave

Beam Angle: 15° / 25° / 30° / 45° degrees

Color strobe effect

Uses 8 DMX Channels

Stand Alone, Master/Slave

Linkable via 3-pin XLR cable

Electronic Dimming: 0-100%

Dimensions: 425*270*240mm

Weight: 3.5 kgs



LED MENELAUS

DU hanging brackets for easy floor standing

Multi-voltage operation: AC 90-240V 50/60Hz

full Master/Slave operation in any operational mode,

Electronic Dimming, color strobe effect and long life operation

black die cast aluminium housing with 36 LED 1W or 3W high MCD LEDs (12 Red, 12 Green, & 12 Blue LEDs)

Smooth RGB color mixing

low heat, Long Life LEDs (100,000 hrs.)

operational Modes: DMX 512 protocol, Sound Active, Auto, master/slave

Beam Angle:15° /25° /30° /45° degrees

Color strobe effect

Uses 8 DMX Channels

Stand Alone,Master/Slave

Linkable via 3-pin XLR cable

Electronic Dimming: 0-100%

ITEM DIMENSION: 280*280*255MM

ITEM WEIGHT: 4.50KGS



DUFLOWER

Electronic power supply AC 110/220V AC 60/50HZ

full Master/Slave operation in any operational mode,
color strobe effect and long life operation

**black housing with 84 5mm high MCD LEDs (12*2 Red, 6*2 Green,12*2 Blue,
6*2 White & 6*2 Yellow LEDs)**

low heat,Long Life LEDs (100,000 hrs.)

operational Modes: DMX 512 protocol, Sound Active, Auto, master/slave

Beam Angle:15° degrees

Color strobe effect

Uses 7 DMX Channels

Stand Alone,Master/Slave

Linkable via 3-pin XLR cable

Dimensions: 170*155*165mm

Weight: 4 kgs



TRIFLOWER

Electronic power supply AC 110/220V AC 60/50HZ

full Master/Slave operation in any operational mode,
color strobe effect and long life operation

**black housing with 126 5mm high MCD LEDs (12*3 Red, 6*3 Green,12*3 Blue,
6*3 White & 6*3 Yellow LEDs)**

low heat,Long Life LEDs (100,000 hrs.)

operational Modes: DMX 512 protocol, Sound Active, Auto, master/slave

Color strobe effect

Beam Angle:15° degrees

Uses 8 DMX Channels

Stand Alone,Master/Slave

Linkable via 3-pin XLR cable

Dimensions:390*270*90mm

Weight:3kgs

QUADFLOWER

Electronic power supply AC 110/220V AC 60/50HZ

full Master/Slave operation in any operational mode,

color strobe effect and long life operation

black housing with 168 5mm high MCD LEDs (12*4 Red, 6*4 Green,12*4 Blue, 6*4 White & 6*4 Yellow LEDs)

low heat,Long Life LEDs (100,000 hrs.)

operational Modes: DMX 512 protocol, Sound Active, Auto, master/slave

Beam Angle:15° degrees

Color strobe effect

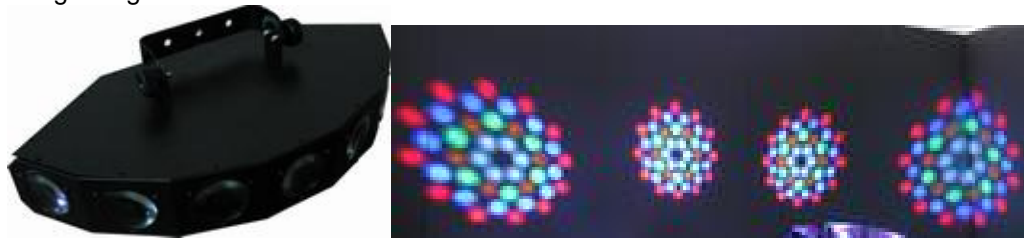
Uses 9 DMX Channels

Stand Alone,Master/Slave

Linkable via 3-pin XLR cable

Dimensions:460*260*170mm

Weight:4kgs



HEPTAFLOWER

Electronic power supply AC 110/220V AC 60/50HZ

full Master/Slave operation in any operational mode,

color strobe effect and long life operation

black housing with 294 5mm high MCD LEDs (12*7 Red, 6*7 Green,12*7 Blue, 6*7 White & 6*7 Yellow LEDs)

low heat,Long Life LEDs (100,000 hrs.)

operational Modes: DMX 512 protocol, Sound Active, Auto, master/slave

Beam Angle:15° degrees

Color strobe effect

Uses 12 DMX Channels

Stand Alone,Master/Slave

Linkable via 3-pin XLR cable

Dimensions:570*280*95mm

Weight:5kgs



REVO II

Electronic power supply AC 90-240V 50/60HZ

full Master/Slave operation in any operational mode,
color strobe effect and long life operation

black housing with 162 5mm high MCD LEDs (48 Red, 36 Green, 42 Blue, 36 White LEDs)

low heat, Long Life LEDs (100,000 hrs.)

operational Modes: DMX 512 protocol, Sound Active, Auto, master/slave

Beam Angle: 15° degrees

Color strobe effect

Uses 5 or 10 DMX Channels

Stand Alone, Master/Slave

Linkable via 3-pin XLR cable

Dimensions: 420*380*370mm

Weight: 5 kgs



UMBRELLA

Electronic power supply AC 90-240V 50/60HZ

full Master/Slave operation in any operational mode,
color strobe effect and long life operation

black housing with 165 5mm high MCD LEDs (54 Red, 60 Green, 51 Blue LEDs)

low heat, Long Life LEDs (100,000 hrs.)

operational Modes: DMX 512 protocol, Sound Active, Auto, master/slave

Beam Angle: 15° degrees

Color strobe effect

Uses 7 DMX Channels

Stand Alone, Master/Slave

Linkable via 3-pin XLR cable

ITEM DIMENSION: 320*320*270MM

ITEM WEIGHT: 3.0KGS



THETIS

power supply 110/220AC 50/60HZ

color strobe effect and long life operation

black housing with 72 5mm high MCD LEDs (24 Red,24 Green,24 Blue LEDs)

low heat,Long Life LEDs (100,000 hrs.)

operational Modes: DMX 512 protocol, Sound Active, Auto

Beam Angle:15° degrees

Color strobe effect

Uses 8 DMX Channels

Stand Alone

Linkable via 3-pin XLR cable

ITEM DIMENSION: 330*330*180MM

ITEM WEIGHT:4.5KGS



LED AETHER 4

Electronic power supply 90-240V AC 50/60HZ

color strobe effect and long life operation

black housing with 256 5mm high MCD LEDs (24*4 Red,24*4 Green,16*4 Blue LEDs)

low heat,Long Life LEDs (100,000 hrs.)

operational Modes: DMX 512 protocol, Sound Active, Auto

Beam Angle:15° degrees

Color strobe effect

Uses 5 DMX Channels

Stand Alone

Linkable via 3-pin XLR cable

ITEM DIMENSION: 938*170*100MM

ITEM WEIGHT:5.0KGS



LED FLOOD

power supply 110/220AC 50/60HZ

full Master/Slave operation in any operational mode,
color strobe effect and long life operation

black housing with 630 5mm high MCD LEDs (216 Red,198 Green,216 Blue LEDs)

low heat,Long Life LEDs (100,000 hrs.)

operational Modes: DMX 512 protocol, Sound Active, Auto

Beam Angle:30° degrees

Color strobe effect

Uses 8 DMX Channels

Stand Alone,Master/Slave

Electronic Dimming: 0-100%

Linkable via 3-pin XLR cable

ITEM DIMENSION: 455*200*126MM

ITEM WEIGHT:4.50KGS

LED NYX

power supply 110/220AC 50/60HZ

full Master/Slave operation in any operational mode,
color strobe effect and long life operation

black housing with 207 10mm high MCD LEDs (63 Red,72 Green,72 Blue LEDs)

low heat,Long Life LEDs (100,000 hrs.)

operational Modes: DMX 512 protocol, Sound Active, Auto

Beam Angle:30° degrees

Color strobe effect

Uses 8 DMX Channels

Stand Alone,Master/Slave

Electronic Dimming: 0-100%

Linkable via 3-pin XLR cable

ITEM DIMENSION: 455*200*126MM

ITEM WEIGHT:4.50KGS



TRLD-611

LED TYPHON

Electronic power supply 90-240AC 50/60HZ

full Master/Slave operation in any operational mode,
color strobe effect and long life operation

black ABS housing with 163 10mm high MCD LEDs (55 Red,54 Green,54 Blue LEDs)

low heat,Long Life LEDs (100,000 hrs.)

operational Modes: DMX 512 protocol, Sound Active, Auto

Beam Angle:30° degrees

Color strobe effect

Uses 8 DMX Channels

Stand Alone,Master/Slave

Electronic Dimming: 0-100%

Linkable via 3-pin XLR cable

ITEM DIMENSION: 210*210*140MM

ITEM WEIGHT:1.50KGS



LED GLAUCE A

Electronic power supply 90-240AC 50/60HZ

full Master/Slave operation in any operational mode,
color strobe effect and long life operation

black housing with high MCD RGB THREE IN ONE 9W LED

43 crisp,bright beams

low heat,Long Life LEDs (100,000 hrs.)

operational Modes: DMX 512 protocol, Sound Active, Auto

Uses 7 DMX Channels

Stand Alone,Master/Slave

Electronic Dimming: 0-100%

Linkable via 3-pin XLR cable

Dimensions: 280*280*280mm

Weight:4.5kgs

LED GLAUCE B

Electronic power supply 90-240AC 50/60HZ

full Master/Slave operation in any operational mode,
color strobe effect and long life operation

black housing with high MCD RGB THREE IN ONE 9W LED+high MCD 3W white LED

43 crisp,bright beams

low heat,Long Life LEDs (100,000 hrs.)

operational Modes: DMX 512 protocol, Sound Active, Auto

Uses 8 DMX Channels

Stand Alone, Master/Slave
Electronic Dimming: 0-100%
Linkable via 3-pin XLR cable
Dimensions: 280*280*280mm
Weight: 4.5kgs



ORION

power supply 110-120/220AC 50/60HZ
color strobe effect and long life operation
black housing with 120 5mm high MCD LEDs (40 Red, 40 Green, 40 Blue LEDs)
low heat, Long Life LEDs (100,000 hrs.)
operational Modes: DMX 512 protocol, Sound Active, Auto
Uses 11 DMX Channels
Stand Alone, Master/Slave
Linkable via 3-pin XLR cable
Dimensions: 35*35*30cm
Weight: 6kgs



LED MINI BALL

IDEAL FOR BARS, DISCO HALLS, SMALL SHOWS, CABARETS, MUSIC SHOPS, MOBILE DJs, etc.
AC 120V/230V 60/50HZ
ELECTRONIC POWER SUPPLY: 90-240V 20W
DC 12V 15RPM MOTOR
NEWLY-MOLDED UNIQUE HOUSING
LED: 37 PCS DIA. 10MM HIGH OUTPUT LEDs,
RED: 12PCS; GREEN: 13PCS; BLUE: 12PCS
LONG LIFE 100,000 HOURS
AUTO MODE
LOW POWER CONSUMPTION, LOW HEAT, LOW MAINTENANCE AND BRIGHT OUTPUT
ITEM DIMENSION: 200*200*280MM
ITEM WEIGHT: 2.30KGS



LED DOUBLE BALL

IDEAL FOR BARS, DISCO HALLS, SMALL SHOWS, CABARETS, MUSIC SHOPS, MOBILE DJs, etc.

AC 120V/230V 60/50HZ

ELECTRONIC POWER SUPPLY: 90-240V 30W

DC 12V 35RPM MOTOR

NEWLY-MOLDED UNIQUE HOUSING

LED:37*2 PCS DIA. 10MM HIGH OUTPUT LEDs,

RED:12*2PCS; GREEN:13*2PCS; BLUE:12*2PCS

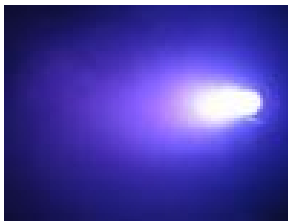
LONG LIFE 100,000 HOURS

AUTO MODE

LOW POWER CONSUMPTION, LOW HEAT, LOW MAINTENANCE AND BRIGHT OUTPUT

ITEM DIMENSION:460*210*320MM

ITEM WEIGHT:6.50KGS



LED DORIS

DU hanging brackets for easy floor standing

Multi-voltage operation: AC 90-240V 50/60Hz

full Master/Slave operation in any operational mode,

Electronic Dimming, color strobe effect and long life operation

black die cast IP 65 aluminium housing with 54 LED 1W or 3W high MCD LEDs (12 Red, 14Green, 14 Blue & 14 white LEDs)

Smooth RGB color mixing

low heat,Long Life LEDs (100,000 hrs.)

operational Modes: DMX 512 protocol, Sound Active, Auto, master/slave

Beam Angle:15° /25° /30° /45° degrees

Color strobe effect

Uses 4 or 8 DMX Channels
 Stand Alone, Master/Slave
 Linkable via 3-pin XLR cable
 Electronic Dimming: 0-100%
 ITEM DIMENSION: 300*300*360MM
 ITEM WEIGHT: 10KGS



LED OURANOS

Multi-voltage operation: AC 90-240V 50/60Hz

full Master/Slave operation in any operational mode,
 Electronic Dimming, color strobe effect and long life operation

black die cast IP 65 aluminium housing with 36 LED 1W high MCD LEDs (12 Red, 12 Green, 12 Blue LEDs)

Smooth RGB color mixing

low heat, Long Life LEDs (100,000 hrs.)

operational Modes: DMX 512 protocol, Auto, master/slave

Beam Angle: 15° / 25° / 30° / 45° degrees

Color strobe effect

Uses 3 or 6 DMX Channels

Stand Alone, Master/Slave

Linkable via 3-pin XLR cable

Electronic Dimming: 0-100%

Dimensions: 275x275x80mm

Weight: 4.25kgs



TRLS-416 DMX

DMX LASER

AC120V 60HZ/220-240V 50/60HZ

Laser power: 30mw/60mw green laser/100mw red laser diode

104 preset geometric patterns including 52 static + 52 motion patterns
 or using customers' patterns

4 operation modes: auto, master/slave, DMX control & Sound Active

8 DMX channels, pattern X, Y and Z moving and rolling, tunneling & screening effects,

animating, dot drawing and pattern dimension changing
Weight: 2.0kgs
Dimension:280x260x170mm

TRLS-416
AUTO LASER

AC120V 60HZ/220-240V 50/60HZ
Laser power: 30mw/60mw green laser/100mw red laser diode
104 preset geometric patterns including 52 static +52 motional patterns
or using customers' patterns
operation modes: auto,& Sound Active
pattern X,Y and Z moving and rolling, tunneling& screening effects,
animating, dot drawing and pattern dimension changing
Weight: 2.0kgs
Dimension:280x260x170mm



TRLS-389

TRI COLOR LASER III

AC120V 60HZ/220-240V 50/60HZ
Laser power: 100mw red laser diode+30mw green laser diode combined
Or 100mw red laser diode+60mw green laser diode
104 preset geometric patterns including 52 static +52 motional patterns
or using customers' patterns
4 operation modes: auto, master/slave, DMX control & Sound Active
8 DMX channels, pattern X,Y and Z moving and rolling, tunneling& screening effects,
animating, dot drawing and pattern dimension changing
Dimension:305x185x100mm
Weight: 4.30kgs



TRLS-512

TRI DMX LASER

AC120V 60HZ/220-240V 50/60HZ

Laser power: 100mw red laser 650nm wave length+30mw green laser or
 100mw red laser 650nm wave length+60mw green laser or
 100mw red laser 650nm wave length*2+30mw green laser or
 100mw red laser 650nm wave length*2+60mw green laser

tri laser outputs

104 preset geometric patterns including 52 static +52 motional patterns

or using customers' patterns

4 operation modes: auto, master/slave, DMX control & Sound Active

8 DMX channels, pattern X, Y and Z moving and rolling, tunneling & screening effects,
 animating, dot drawing and pattern dimension changing

Dimension: 420x185x90mm

Weight: 5.50kgs



TRLS-513

QUAD DMX LASER

AC120V 60HZ/220-240V 50/60HZ

Laser power: 100mw red laser 650nm wave length*2+30mw green laser or
 100mw red laser 650nm wave length*2+60mw green laser or
 100mw red laser 650nm wave length*2+30mw green laser*2 or
 100mw red laser 650nm wave length*2+60mw green laser*2

four laser outputs

104 preset geometric patterns including 52 static +52 motional patterns

or using customers' patterns

4 operation modes: auto, master/slave, DMX control & Sound Active

8 DMX channels, pattern X, Y and Z moving and rolling, tunneling & screening effects, animating, dot drawing and pattern dimension changing

Dimension: 600x180x150mm

Weight: 7.05kgs



PL DESIGNER

AC120V 60HZ/220-240V 50/60HZ

Laser power: 100mw green laser diode

designed with ILDA control functions,

controllable via Phoenix or Pangolin laser show system

operation mode: auto/sound active/master, slave/ DMX 512 protocol

stable controlling system and high efficient optical structuring

high speed vibration mirrors creating clear, regular, exact and stable patterns

vibration mirror scanning speed: 20kpps

10 DMX channels functioning as

animating, 3D patterning, slow writing,

pattern dimension changing,

pattern X,Y and Z moving and rolling,

shaping and dot writing and splitting and other splendid laser effects

Dimensions: 310*325*80mm

Weight:3.0kgs



PL DESIGNER RG

AC120V 60HZ/220-240V 50/60HZ

Laser power: 100mW green laser diode+150mw red laser diode

designed with ILDA control functions,

controllable via Phoenix or Pangolin laser show system

operation mode: auto/sound active/master,slave/ DMX 512 protocol

stable controlling system and high efficient optical structuring

high speed vibration mirrors creating clear, regular, exact and stable patterns

vibration mirror scanning speed: 20kpps

11 DMX channels functioning as

animating, 3D patterning, slow writing,

pattern dimension changing,

pattern X,Y and Z moving and rolling,

shaping and dot writing and splitting and other splendid laser effects

Dimensions: 310*325*80mm

Weight:3.0kgs



G 1000 RGB

AC120V 60HZ/220-240V 50/60HZ

Laser power: 500mW red laser diode, 200mW green laser diode, 300mw blue laser

designed with ILDA control functions,

controllable via Phoenix or Pangolin laser show system

operation mode: auto/sound active/master,slave/ DMX 512 protocol

stable controlling system and high efficient optical structuring

high speed vibration mirrors creating clear, regular, exact and stable patterns

vibration mirror scanning speed: 20kpps
 11 DMX channels functioning as
 animating, 3D patterning, slow writing,
 pattern dimension changing,
 pattern X,Y and Z moving and rolling,
 shaping and dot writing and splitting and other splendid laser effects
 Dimensions: 310*325*80mm
 Weight:3.0kgs



BLACKLITE 400

AC 220V/230V 50/60Hz
 Super High ultraviolet UV output
 Ideal for large venues
 Lamp: E40 400W
 Dimension: 390*360*350mm
 Weight: 8kgs



8CH SWITCHING PANEL

Larger easy to access buttons
 8 lighted switches on front panel
 15A resetable circuit breaker equipped
 Eight AC grounded sockets on rear
 Maximum load: 15 Amps/3000W
 Dimension: 480*140*100mm
 Weight: 1.5kgs



TRDX-922
 EIGHT WAY DMX SIGNAL AMPLIFYING DISTRIBUTOR
 one input with eight outputs
 fully compliant to dmx-512 specification

3 pin XLR input and a passive loop through.

8 way isolated DMX splitter output.

input isolated from outputs

outputs are isolated from each other

dimension: 480x215x45mm

weight: 3.5kgs



TRDX-921

FOUR WAY DMX SIGNAL AMPLIFYING DISTRIBUTOR

one input with four outputs

fully compliant to dmx-512 specification

3 pin XLR input and a passive loop through.

4 way isolated DMX splitter output.

input isolated from outputs

outputs are isolated from each other

dimension: 480x215x45mm

weight: 3.5kgs



TRDX-630

DMX 360CH LIGHTING CONSOLE

18 DMX scanners can be controlled with each up to 20 channels

54 independent scenes running simultaneously

36 programs can run simultaneously with each controlled separately
and running time and slope adjusting,

18 program groups operating simultaneously with

each including 36 steps, each step consisting 36 programs,

fade time and speed adjustable

Two wheel pan/tilt 16 resolution bit movement

built- in micro phone via audio and MIDI effecting in bank and
chase running

output driving modules far from DMX signal interference

LCD program display

cross time and run speed control

Dimensions: 488x288x100mm

Weight: 5.5kgs



TRDX-220

DMX 24CH SCENE SETTER

24 DMX channels and 48 programs

single and mix chase via audio

tap sync and manual speed control

back up memory and blackout & full-on

fade time and chase direction

mode and step change, blackout and full on via midi signal

built-in microphone via audio signal

3 pin XLR DMX signal

DC 9V 500mA adaptor included

Dimensions: 482x264x80mm

Weight: 5.0 kgs



TRDX-230

DMX 48CH SCENE SETTER

.512 DMX channels ,including 48 individual channels output

.Unlimited scenes can be created using 48 faders manually

.4 pages of programs, each page holds up to 24 programs

.Each programs consists of up to 10000 Steps(recorded scenes)

.The programs can be activated by Audio/Speed slider/Standard beat,and etc.

.Select one or more programs at a time

.Send MIDI file dump and receive MIDI file dump

.Blackout master

.Record code enables to protect the program from intentional acts

.DMX polarity selectable for the DMX cable

.MIDI control over 48 channels, 48 programs, Full on,Blackout and etc.

.Power failure memory
Dimensions:710X264X90mm
Weight:7.5kg



TRDX-422

DIMMER PACK 4C

The pack is a 4 channel dimmer. It is the most advanced unit for its size and price. It has 7 operating modes and 42 built-in chasing programs and fade time control and memory backup.

Specification

Power input: AC 230v-50Hz, 16A

Audio input: 100mv-1vpp

Fade time: 0-10 seconds

Fuse:F6.3A 250v,5×20MM

Dimensions: 482×132×126.5mm(19×3u)

Weight: 4.5kg



TRDX-420

DIMMER PACK 4A

Compact DMX chaser and dimmer of 4 channel .

5A per channel output and the total is 16A.

16 chase patterns inside with adjustable speed. DMX dimming

Dimensions: 260×195×170mm



TRDX-421

DIMMER PACK 4 B

Introduction

The unit is a four channel power DMX dimmer pack. It is controlled by analog input from 0v to 10v voltage or DMX-512. It provides a power supply for analog controller.

Specification

Power input: AC 230V-50Hz, 16A

Analog input: 0-10V

Power supply: 15V, 500Ma

DMX input: 3 pin XLR male socket

DMX output: 3 pin XLR female socket

Fuse: F 6.3A 250V, 5*20MM. 4 purchase

Circuit breaker: 16A

Dimension: 318×165×96mm

Weight: 2.95kg



TRDX-412

6CH DIMMER PACK II

6 channel DMX data needed

3 phase power input, total: 96A

6 channel output, 16A each channel

Function: manual, auto, programming

Memory backup for all settings

Dimension: 482×381×89mm

Weight: 7.5kg



TRDX-441

12CH DIMMER PACK 2

12 channel DMX dimmer pack with current protection

2×16 characters LCD display

DMX signal or analog 0-10 V control

Set up or modified program by button on panel

Set up preheat for each channel

Temperature control to protect triacs

5000W output per channel, Total: 48000W

Dimension: 483×178×436mm

Weight: 30kg



TRDX-520

POWER DISTRIBUTOR I

3x32A POWER DISTRIBUTOR WITH METER

Digital voltage & amperage monitoring phase

Residual current circuit breaker 40/0.03A

6x16AC automatic fuses per phase

Power input: 1.5m (5x6) cable with CEE socket 3x32A

Output: CEE 3x32A socket, 6pcs, 16A schuko with cover(2pcs per phase)

Dimensions: 483×132×265mm

Weight: 7kg



TRDX-521

3x16A POWER DISTRIBUTOR WITH METER

Digital voltage & amperage monitoring phase

16 AC automatic fuses per phase

Power input: CEE socket 3x16A

Output: 1pcs 16A built-in schuko socket with cover

Output: 6pcs 16A schuko with cover(2pcs per phase)

Dimensions: 483×210×88mm

Weight: 9.5kg



TRDX-522

POWER DISTRIBUTOR III

3x63A POWER DISTRIBUTOR WITH METER

Digital voltage & amperage monitoring phase

Residual current circuit breaker 63/0.03A

4x32 AC automatic fuses per chase

Power input: 1.5m (5x10) cable with CEE socket 3x63 A

Output: 4pcs. CEE 3x32 A socket

Dimensions: 483×132×267

Weight: 9.5kg



TRDX-410

6 CH DIMMER PACK

0-10V analog signal input

3 pin XLR DMX 512 input

AC 3 phase input, 120V/230V , 60/50Hz

Slide dimming control and 50% preheat

Circuit breaker and overheat protection

Total output 60A, each channel up to 10A

Dimensions: 482×380×87mm

Weight: 7.5kg



TRDX-210

DMX 192 CH CONTROLLER I

8 scenes to be saved in each of 30 banks, 240 scenes altogether

6 chases and four digit LED program display

Built-in micro phone via audio

and MIDI effecting in bank and chase running

DMX polarity selection and 3 pin XLR socket

fade time and run speed control

DC 9V-12V 300mA adaptor included

Dimensions: 482×132×70mm

Weight: 2.4kg



TRDX-211

DMX 192CH LIGHTING CONSOLE

192 DMX channels, control up to 12 lighting fixtures with 16 DMX channels

12 preset programs, 12 programs with each running 100 steps

Any scenes can be combined and edited, and output

Programs and scenes can run symtaneously

Built-in macro, blackout, fade and cross time control

100-240V 50/60Hz power supply

weight:3.0 kgs

dimension: 482x178x55mm



TOP 1612J

The scanners under control by Pan and Tilt jog wheels

Sliding channel can set up X/Y mode or all channel mode

MIDI control over banks, chases and Blackout

Machinery can be controlled

DMX polarity select

Power failure memory

Use RDM to Remote control DMX address

All the data can be copy by U disk ,also can control the software promotion by it .

Support FAT 16/32 file layout

192 DMX512 channels.DMX512 standar singal output

Controlled 12 lights,each light 16 channels.

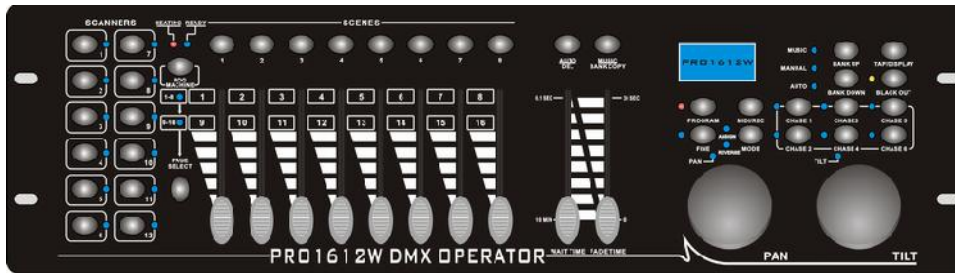
30 banks of 8 programmable scenes

6 chases of 240 programmed scenes from banks;At

most 20 times of every program when opened.

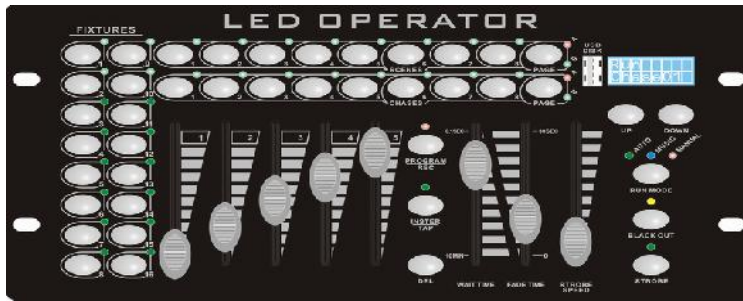
Data will be displayed by LCD

Voice sensitive can be adjusted from 0-100%
 8 channels or 16 channels for each light
 DMX channel can reversed ,DMX data can change to percent mode
 and numerical mode display
 joystick control
 Power: DC 9V 1.5A
 NW: 2.0KGS
 DIMENSIONS: 482*134*70MM



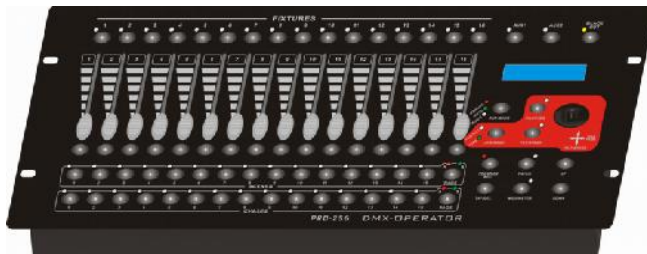
TOP 1612W

The scanners under control by Pan and Tilt jog wheels
 Sliding channel can set up X/Y mode or all channel mode
 MIDI control over banks, chases and Blackout
 Machinery can be controlled
 DMX polarity select
 Power failure memory
 Use RDM to Remote control DMX address
 All the data can be copy by U disk ,also can control the software promotion by it .
 Support FAT 16/32 file layout
 192 DMX512 channels.DMX512 standar singal output
 Controlled 12 lights,each light 16 channels.
 30 banks of 8 programmable scenes
 6 chases of 240 programmed scenes from banks;At
 most 20 times of every program when opened.
 Data will be displayed by LCD
 Voice sensitive can be adjusted from 0-100%
 8 channels or 16 channels for each light
 DMX channel can reversed ,DMX data can change to percent mode
 and numerical mode display
 DU wheels control
 Power: DC 9V 1.5A
 NW: 2.0KGS
 DIMENSIONS: 482*134*70MM



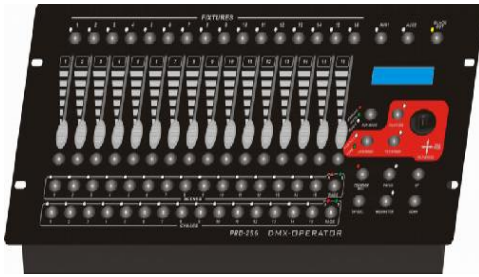
LED 160CH CONTROLLER

160 DMX channels;
 16 scenes; All can be output simultaneously;
 16 chases; All can be output simultaneously;
 Each program can be set the frequency of running from 1-200
 Manual, sound active and auto modes
 USB for data backup and system update;
 RDM to control the DMX addresses of the fixtures;
 Sound sensitivity digitally adjustable (0%-100%);
 Strobe from 1-20 flashes per second
 Power: DC 9V 1A
 NW: 1.20KGS
 DIMENSIONS: 308*142*70MM



TOP 256J

256 DMX channels;
 30 chases; 2 or more chases can be output simultaneously;
 30 scenes; All can be output simultaneously;
 USB for data backup and system update;
 RDM to control the DMX addresses of the fixtures;
 Sound sensitivity digitally adjustable (0%-100%);
 16 faders, can be set by joystick control
 Power: DC 9V 1.5A
 NW: 2.8KGS
 DIMENSIONS: 482*200*67MM



TOP 512J

512 DMX channels;

30 chases; 2 or more chases can be output simultaneously;

30 scenes; All can be output simultaneously;

USB for data backup and system update;

RDM to control the DMX addresses of the fixtures;

Sound sensitivity digitally adjustable (0%-100%);

16 faders, can be set by joystick control, different DMX channels can be set to one fader as desired,

Power: DC 9V 1.5A

NW: 2.8KGS

DIMENSIONS: 482*200*67MM



DMX 48CH SCENE SETTER B

48 DMX channels;

36 scenes; All can be output simultaneously;

48 chases; 2 or more chases can be output simultaneously;

USB for data backup and system update;

RDM to control the DMX addresses of the fixtures;

Sound sensitivity digitally adjustable (0%-100%);

Manual, sound active and auto modes

DMX, scenes, programs, dimmer can control symtaneously

Power: DC 9V 1.5A

NW: 3.6KGS

DIMENSIONS: 482*244*70MM



FM-214

MINI FOGGER 400

Constant and steady output fog

On/off remote control

Tank volume: 0.30 liters

Heater: 400W

Output: 3000 cuft pm

5-minute warming up time

Dimension: 230×140×135mm

Weight: 1.80kg



FM-220

FOGGER 1000

AC 120V/230V 60/50Hz

High output fog

On/off remote control

Tank volume: 1.5 liter

Heater: 1000W

Output: 9000cuft pm

5-minute warming up

Dimensions: 53×32×27cm

Weight: 7.5kg



FM-612

FOGGER 1500 DMX

AC 120V/230V 60/50Hz

Constant and steady output fog

DMX 512 protocol controlling the fog output

***MIRROR PIPING MAKING PIPES NON BLOCKED

***ELECTRONIC TEMPERATURE CONTROL ADJUSTING THE TEMPERATURE

AT A STEADY LEVEL AND UNNECESSARY TO HEAT AGAIN AND AGAIN
 Fog timer: FM-7 LCD display included
 (fog output interval time setting and fog continuous output time adjusting)
 Remote control: FM-1/FM-3 optional
 Tank volume: 2.50 liters
 Heater: 1500W
 Output: 20000 cuft pm
 Fuse: 250V 7A
 11-minute warming up time
 Dimensions: 53X32X30cm
 Weight: 8 kgs



FM-621
 FOGGER 3000 DMX
 AC 120V/230V 60/50Hz
 Constant and steady output fog
 DMX 512 protocol controlling the fog output
 ****MIRROR PIPING MAKING PIPES NON BLOCKED
 ****ELECTRONIC TEMPERATURE CONTROL ADJUSTING THE TEMPERATURE
 AT A STEADY LEVEL AND UNNECESSARY TO HEAT AGAIN AND AGAIN
 Fog timer: FM-7 LCD display included
 (fog output interval time setting and fog continuous output time adjusting)
 Remote control: FM-1/FM-3 optional
 Tank volume: 9.50 liters
 Heater: 3000W
 Output: 40000 cuft pm
 Fuse: 250V 13A
 11-minute warming up time
 Packing dimension: 770x390x305mm
 Gross weight: 17.0 kgs



MULTIPLACING FOGGER

positioning on the ground to fog upward to have a column of fog effect ,can be mounted on the wall to easily fog-cover the surroundings with atmospheric effect, can be used to fog in upright position by carrying the handle like ordinary fog machine.

AC 120V/230V 60/50Hz
 Constant and steady output fog
 DMX 512 protocol controlling the fog output
 ****MIRROR PIPING MAKING PIPES NON BLOCKED

****ELECTRONIC TEMPERATURE CONTROL ADJUSTING
THE TEMPERATURE AT A STEADY LEVEL
AND UNNECESSARY TO HEAT AGAIN AND AGAIN

Wireless remote: FM-3

Tank volume: 2.0 liters

Heater: 1500W

Output: 20000 cuft pm

Fuse: 250V 10A

8-minute warming up time

NW:10kgs

Dimension: 370*295*135mm



MULTIANGLEADJUSTING FOGGER

The fog emitting angles can be adjusted as desired

AC 120V/230V 60/50Hz

Constant and steady output fog

DMX 512 protocol controlling the fog output

****MIRROR PIPING MAKING PIPES NON BLOCKED

****ELECTRONIC TEMPERATURE CONTROL ADJUSTING
THE TEMPERATURE AT A STEADY LEVEL
AND UNNECESSARY TO HEAT AGAIN AND AGAIN

Wireless remote: FM-3(optional)

Fog timer: LCD controller included(fog output interval time setting and fog continuous output time adjusting)

Tank volume: 2.0 liters

Heater: 1500W

Output: 20000 cuft pm

Fuse: 250V 10A

8-minute warming up time

NW:15kgs

Dimension: 560*350*390mm



SUPER HAZE FOGGER

Haze machine,boasting a fine, dry haze effect,equipped with a range of sophisticated features which include a high precision PCB design,aluminum cast heater, a silent heavy-duty pump and controllable twin fans,precise fan control is achieved by 3 adjustable levels with DMX on-board,with the quietest pump allowing for virtually silent operation

AC 120V/230V 60/50Hz

Constant and steady output fog

DMX 512 protocol controlling the fog output

Fog timer: LCD controller included(fog output interval time setting and fog continuous output time adjusting)

Tank volume: 2.50 liters

Output: 3500 cuft pm

Fuse: 250V 10A

12-minute warming up time

NW:21kgs

Dimension: 630*280*280mm



MIST FOGGER

The fog emitting continuously as mist fog

AC 120V/230V 60/50Hz

Constant and steady output fog

DMX 512 protocol controlling the fog output

****MIRROR PIPING MAKING PIPES NON BLOCKED

****ELECTRONIC TEMPERATURE CONTROL ADJUSTING

THE TEMPERATURE AT A STEADY LEVEL

AND UNNECESSARY TO HEAT AGAIN AND AGAIN

Fog timer: LCD controller included(fog output interval time setting and fog continuous output time adjusting)

Tank volume: 2.50 liters

Heater: 1500W
Output: 3500 cuft pm
Fuse: 250V 10A
12-minute warming up time
NW:35kgs
Dimension:460*300*430mm



FM-1 ON/OFF CONTROLLER
ON/OFF REMOTE FOGGER CONTROL
Used for FM-620 SUPER FOGGER 3000 DMX
& FM-610 SUPER FOGGER 1500 DMX
& FM-230 SPRITE FOGGER 1000
& FM-213 MINI FOGGER 700
& FM-311 DMX HAZER
& FM-710 DU SUPER FOGGER
& FM-510 FOGGER 1200



FM-3 WIRELESS FOGGER CONTROL
Used for FM-620 SUPER FOGGER 3000 DMX
& FM-610 SUPER FOGGER 1500 DMX
& FM-611 SKYFOGGER 1500 DMX
& FM-230 SPRITE FOGGER 1000
& FM-710 DU SUPER FOGGER
& FM-510 FOGGER 1200



FM-7: FOGGER TIMER

Used for FOGGER 3000 DMX
& FOGGER 1500 DMX



BU-310

BUBBLE MACHINE

AC 120V/230V 60/50Hz

High output bubbles

AC 24rpm motor

Tank volume: 0.8 liter

Dimension: 27x24x25cm

Weight: 3.0kgs



BU-410

SUPER BUBBLE II

AC 120V/230V 60/50Hz

Super high output bubbles

Double bubble wheels

Auto & wireless remote control

Power consumption: 120 W

Tank volume: 4 liters

Dimensions: 48 x40 x 47cm

Weight: 14 kg



PHOEBE BUBBLE A

AC 120V/230V 60/50Hz
 Super high output bubbles flying all round
 Auto & wireless remote control
 Power consumption: 15w
 Tank volume: 1 liters
 Bubbles covering up to 50 square meters
 NW:4kgs
 Dimension:340*170*170mm



PHOEBE BUBBLE B

AC 120V/230V 60/50Hz
 Four strong fans with four bubble wheels producing bubbles flying all round
 Auto & wireless remote control
 Power consumption: 100w
 Tank volume: 1.5 liters
 Bubbles covering up to 100 square meters
 NW:11kgs
 Dimension:421*250*197mm



SN-700

MINI SNOW

AC 120V/230V 60/50Hz
 Power consumption: 700VA
 Strong blower creating rich snow flakes
 Snow flakes flying up to 10 meters
 control box can adjust the volume of snow flakes outputs
 Tank volume: 1.0 liters

Dimension: 58x37x40cm

Weight: 3kgs



SN-1500

SUPER SNOW

AC 120V/230V 60/50Hz

Power consumption: 1500VA

Strong blower creating rich snow flakes

Snow flakes flying up to 15-20 meters

control box can adjust the volume of snow flakes outputs

Tank volume: 5.0 liters

Dimension: 600*370*370mm

Weight: 9.5kgs